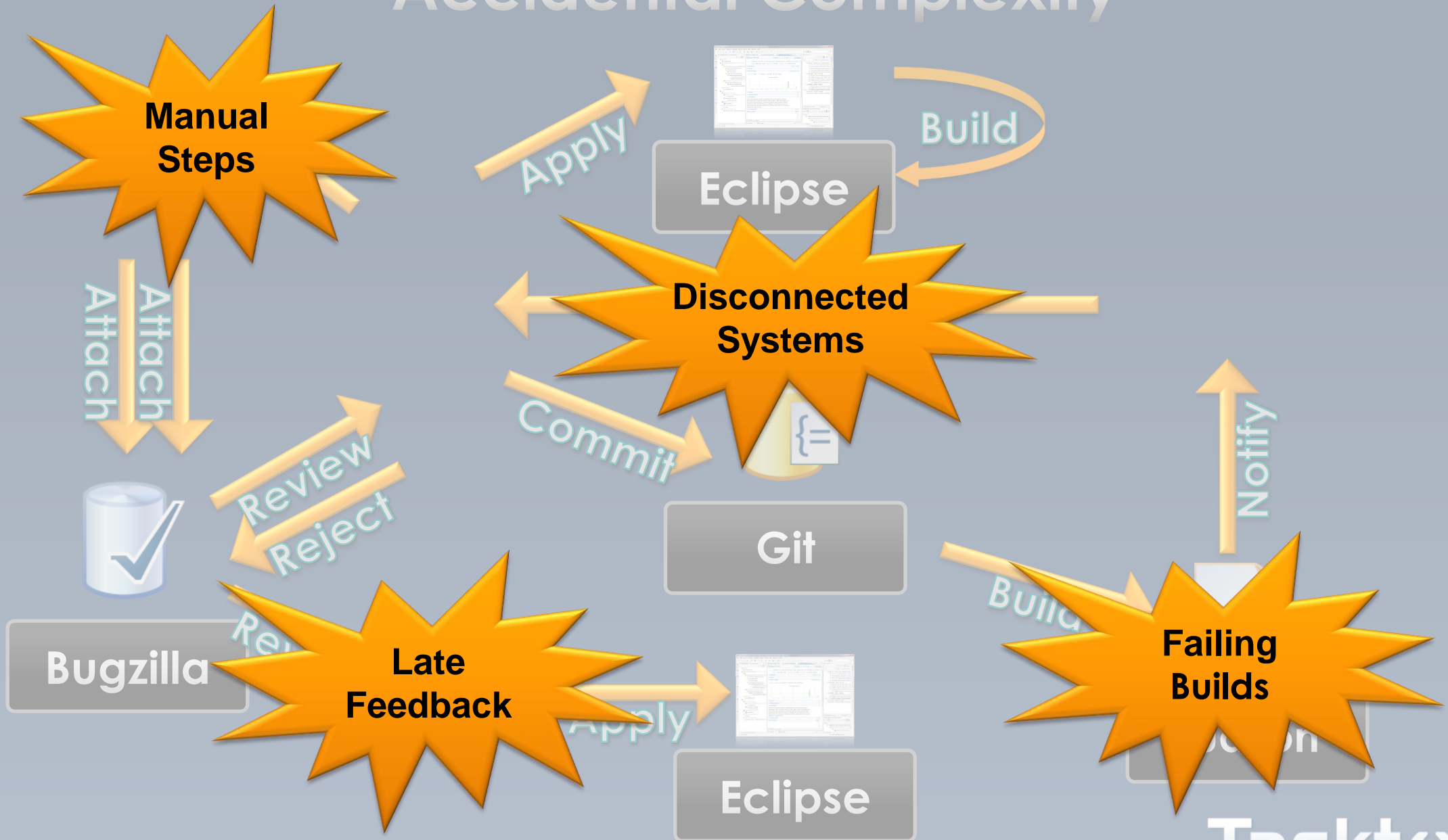
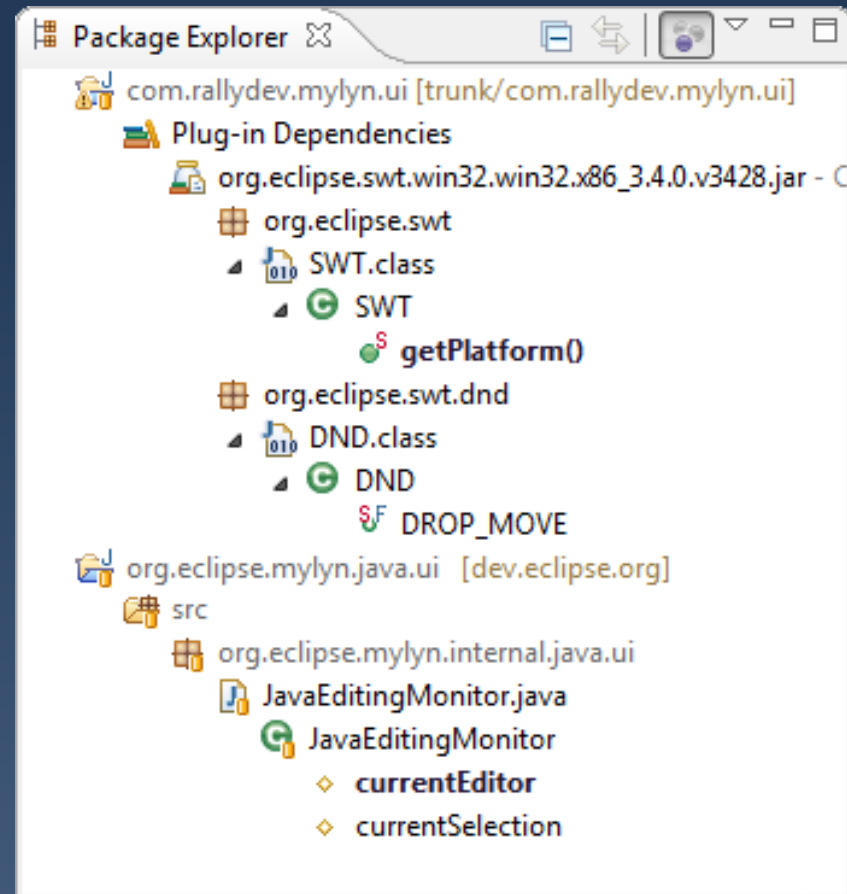


Git, Gerrit und Hudson mit Eclipse Mylyn effektiv einsetzen

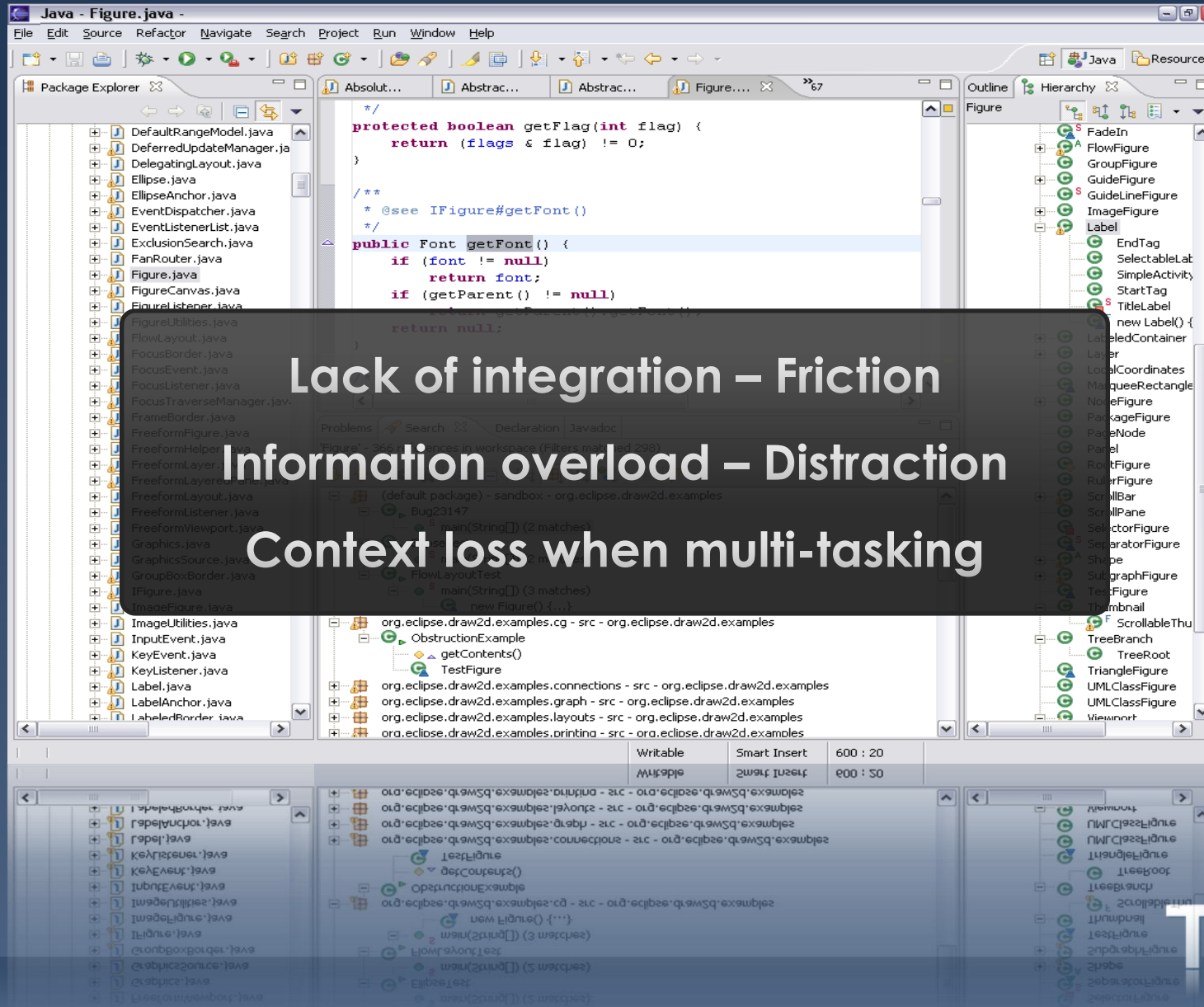
Accidental Complexity



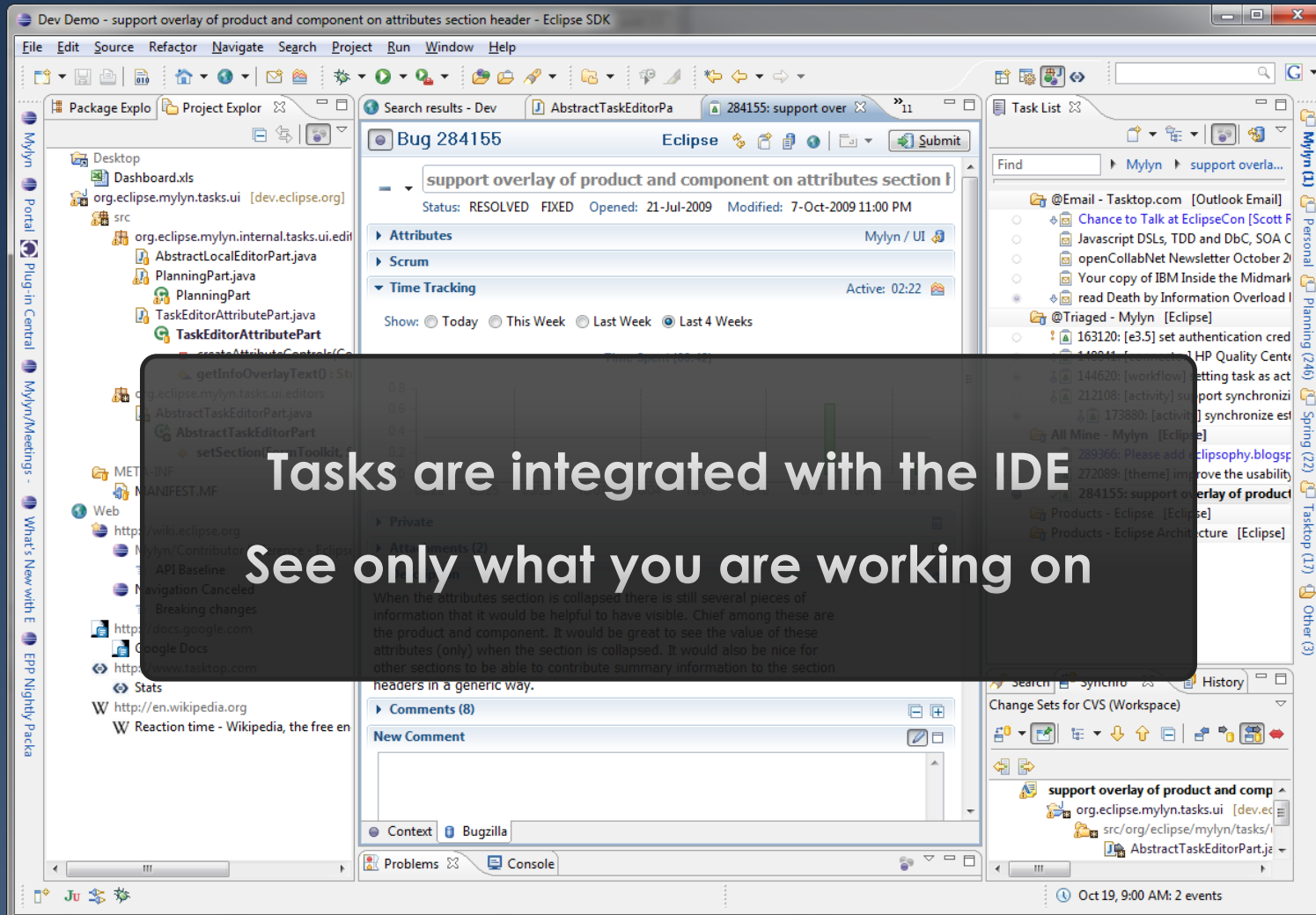
Demo: Task-focused Development



90% Irrelevant



Task-Focused Interface



Demo: Code Review

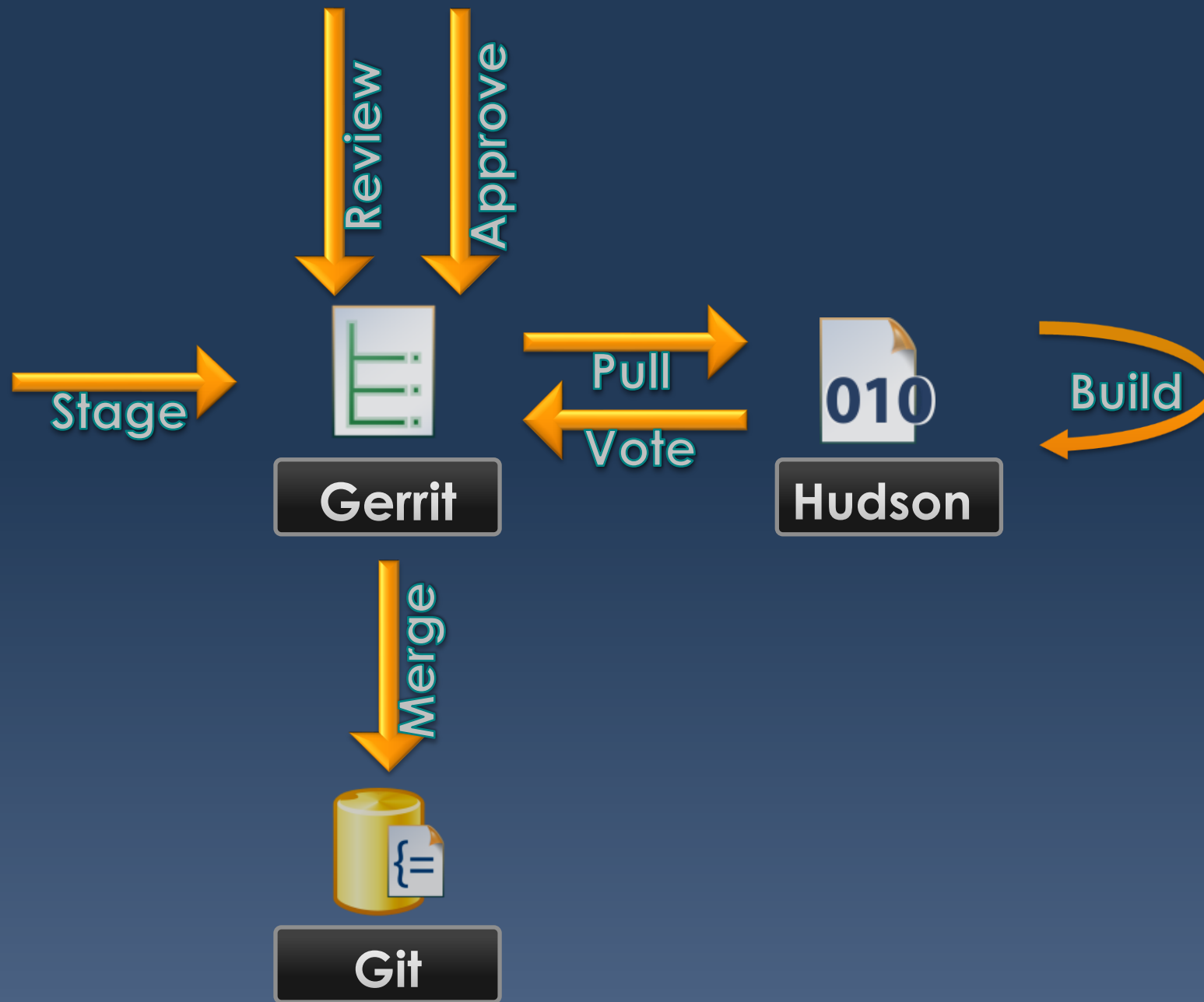
```
/**
 * @return an immutable DirCache instance. A new instance is created
 *         current instance is outdated
 * @throws NoWorkTreeException
 * @throws CorruptObjectException
 * @throws IOException
 */
public UnmodifiableDirCache getDirCache() throws NoWorkTreeException,
        CorruptObjectException, IOException {
```

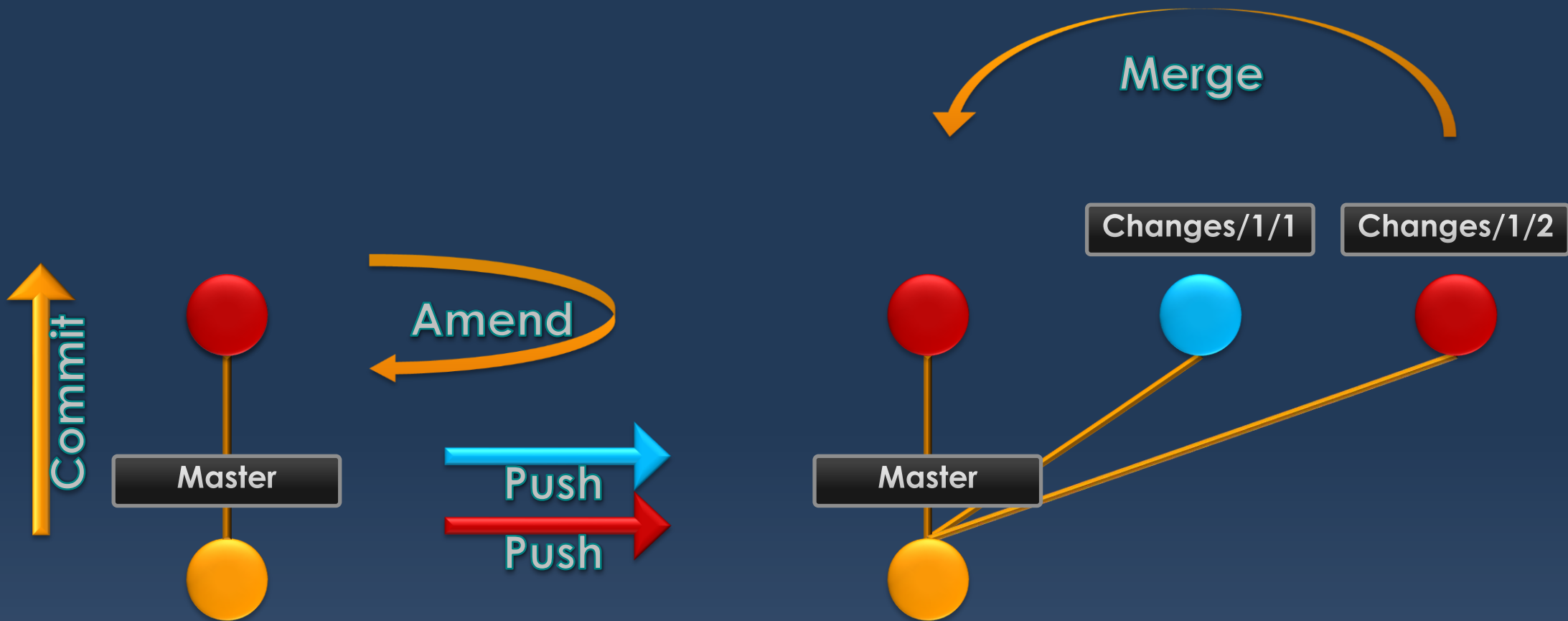
Shawn Pearce 23-Jan-2011 3:55 PM

Because the field is volatile, its bad to read it multiple times in the method. Instead do:

```
DirCache ro = readOnlyDirCache;
if (ro == null || ro.isOutdated()) {
    ro = new UnmodifiableDirCache(getIndexFile(), getFS());
    readOnlyDirCache = ro;
}
return ro;
```

Press 'F2' for focus.





Application Lifecycle Tools



Tasks

Bugzilla

Trac

OSLC



Context

Java

C/C++



Versions

CVS

Git

OSLC



Docs

WikiText

RichText



Builds

Hudson

OSLC



Reviews

Tasks

Gerrit

IEEE

Mylyn 3.8

Released on June 27 as part of Eclipse Juno

Mylyn

- <http://download.eclipse.org/mylyn/releases/latest>

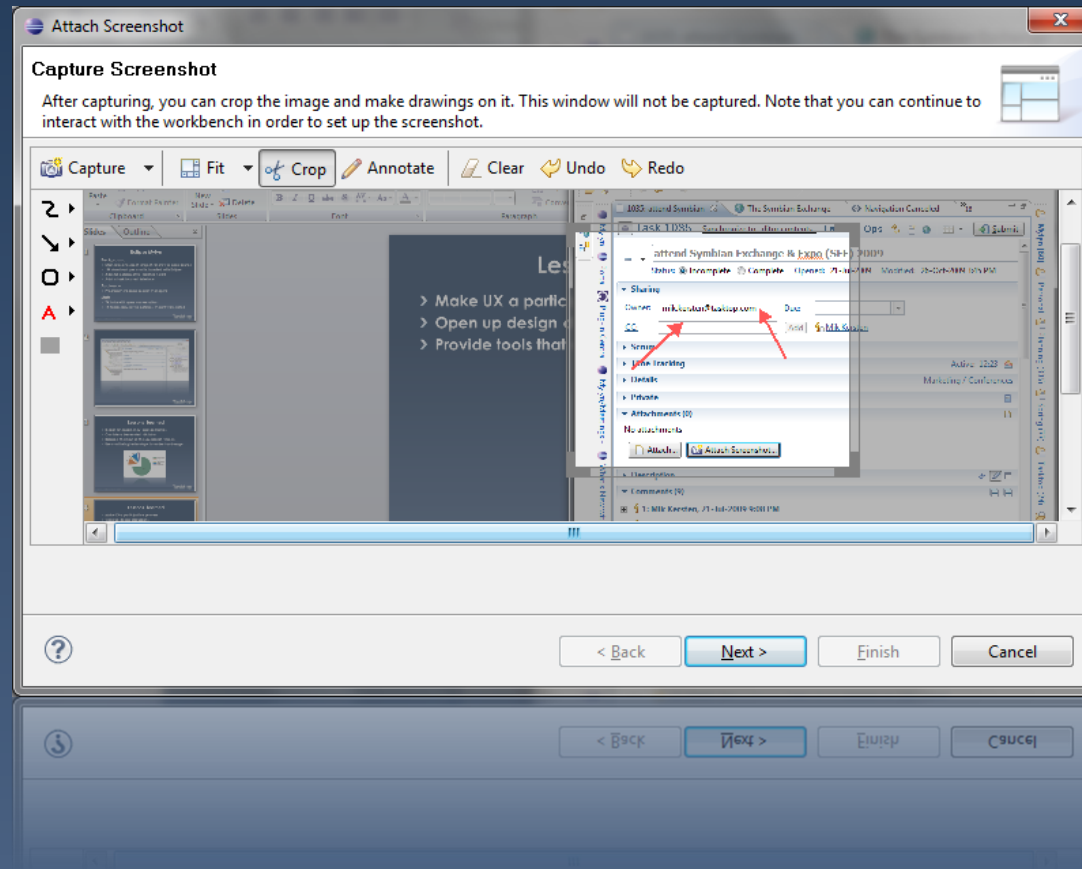
Hudson, Gerrit Connector

- Task List > New Task... > Install More Connectors

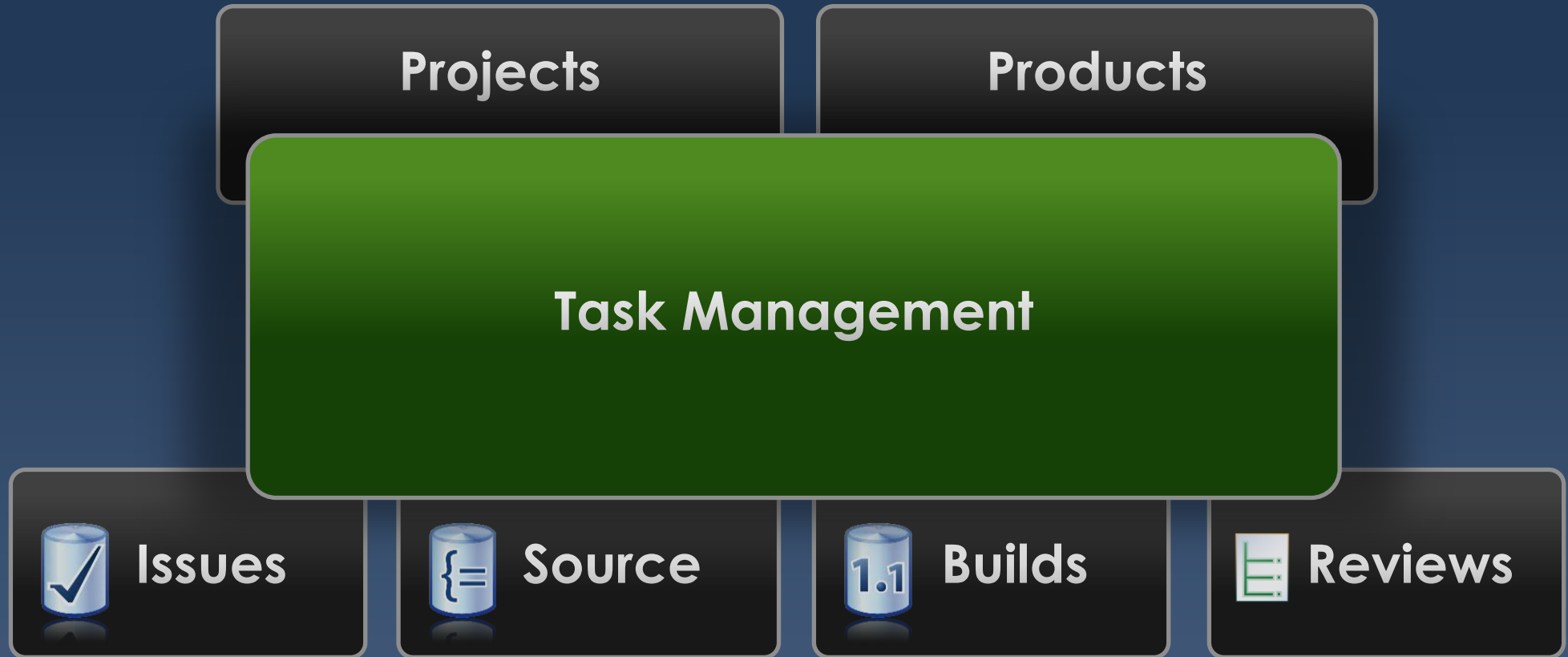
Building on Community

One of the most transparent and permeable OSS projects

1/7th of tasks resolved by patch contributions, over 900



Connecting Planning to Production



Questions?

Steffen Pingel <steffen.pingel@tasktop.com>