

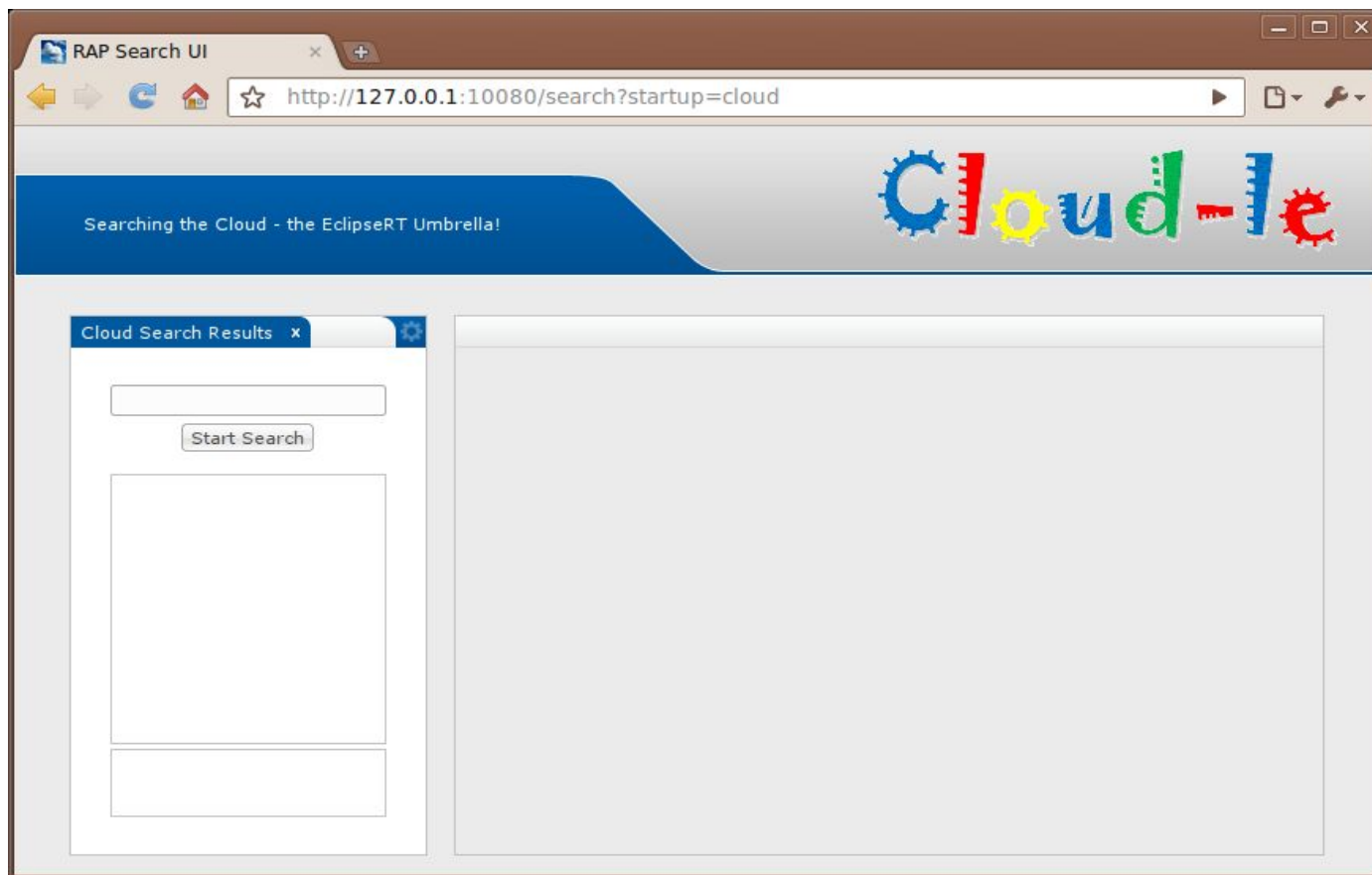


# Searching the Cloud

**The eclipseRT Umbrella!**

***Markus Knauer***  
***EclipseSource***

## The Goal: Cloudle



## Individual Cloud Experience?!

- Google mail accounts
  - ◆ Do you use it for your mails
- Amazon Simple Storage Service
  - ◆ Did you know that you downloaded Eclipse Helios from S3 / CloudFront?
- Amazon Elastic Cloud Computing
- Salesforce.com (CRM)
- Microsoft Windows Azure
- Google AppEngine



# Cloud Definition

**Many definitions exist!**

## **NIST definition**

**“Cloud computing is a model for enabling available, convenient, on-demand network access to a shared pool of configurable computing resources (e.g., networks, servers, storage, applications, and services) that can be rapidly provisioned and released with minimal management effort or service provider interaction.”**

**(National Institute of Standards and Technology).**

## **Essential characteristics**

- ◆ On-demand self service
- ◆ Ubiquitous network access
- ◆ Location independent resource pooling
- ◆ Rapid elasticity
- ◆ Measured services

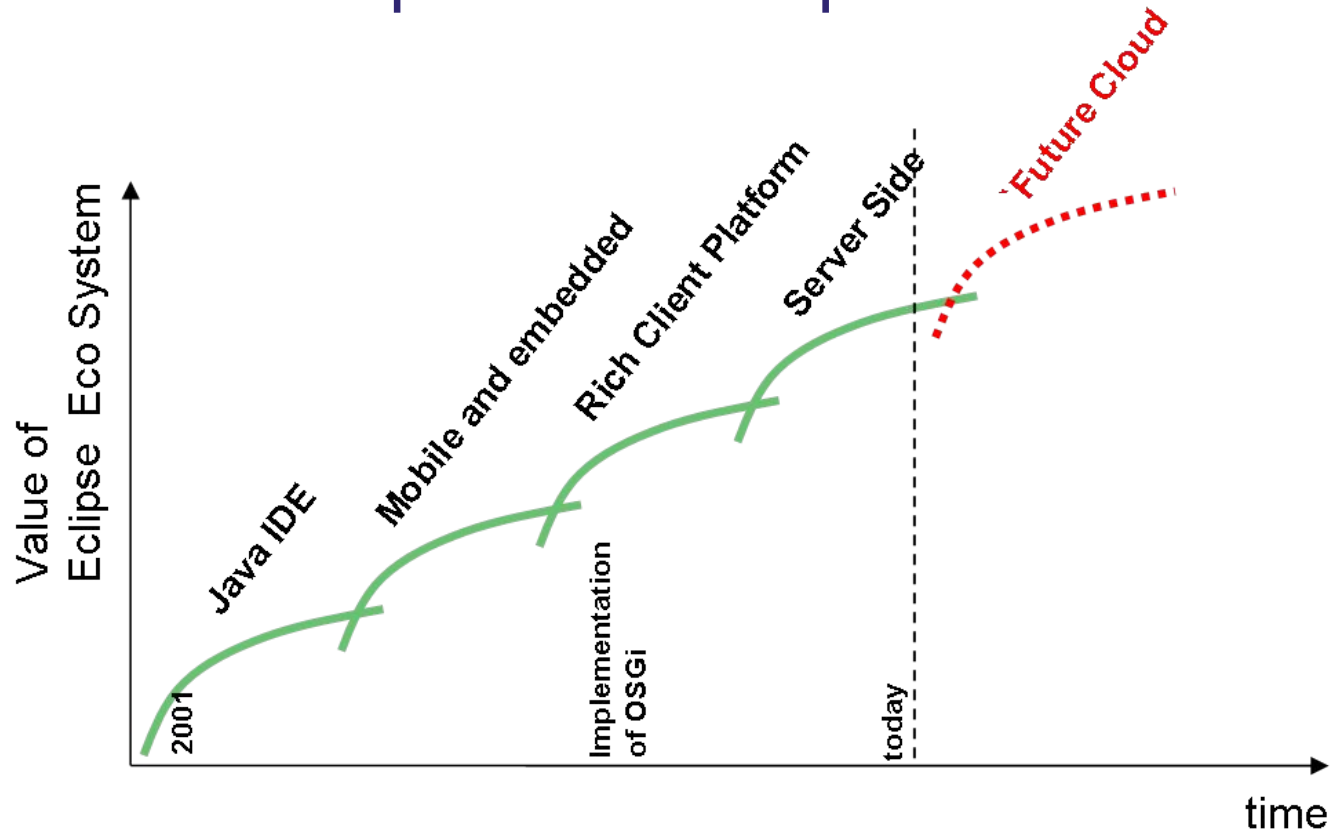
## **Delivery Models**

- ◆ IaaS
- ◆ PaaS
- ◆ SaaS

## **Deployment models**

- ◆ Private
- ◆ Community
- ◆ Public
- ◆ Hybrid

# Platform Development in Eclipse



Embedded →



Mobile →



Desktop →



Server →



Cloud (?)

# The Eclipse Technology Stack



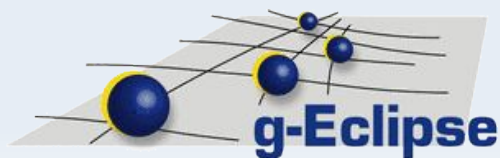
eclipse**RT**

**RAP**  
Rich Ajax Platform

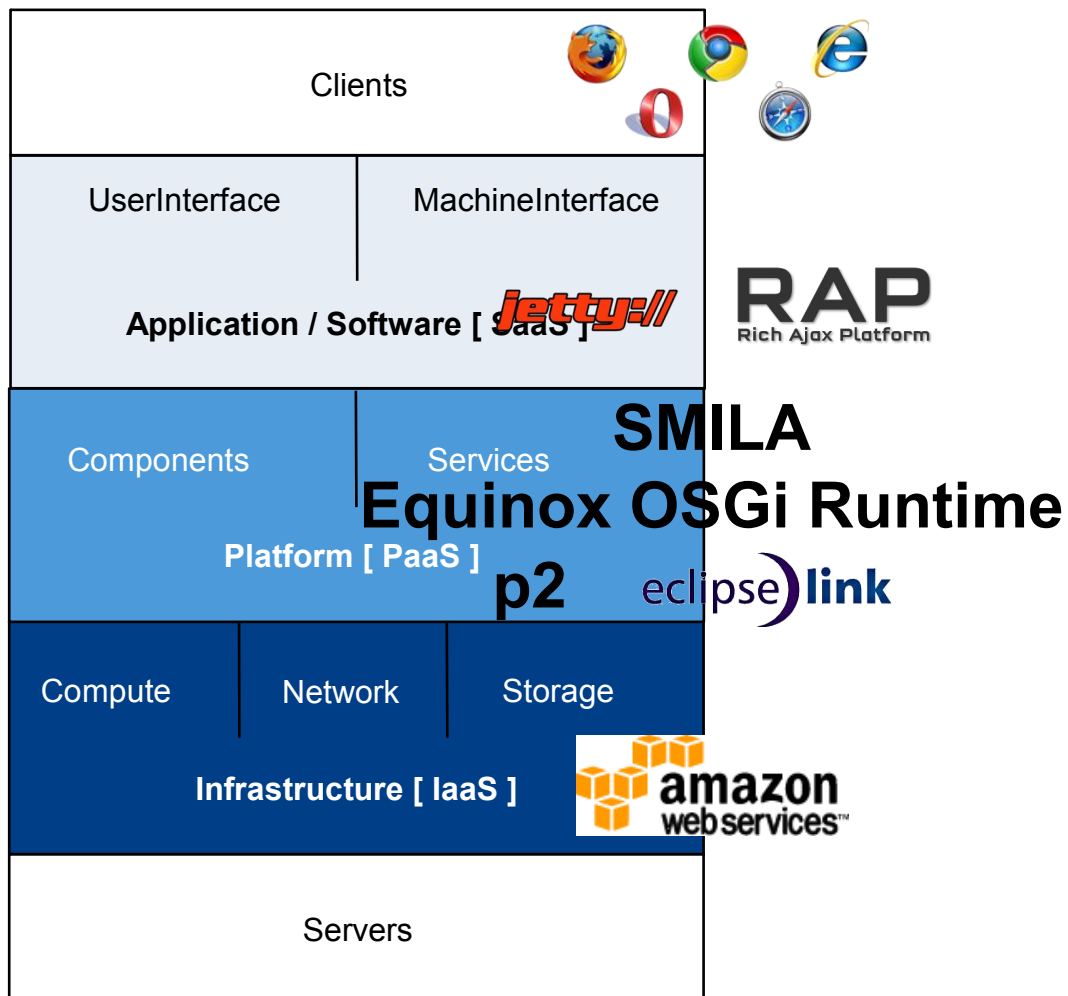
**jetty://** SMILA

Equinox OSGi Runtime

p2 eclipse**link**



# The Cloud from 10000 ft





# g-Eclipse

Eclipse Technology Project since 2006

Intuitive and easy access for

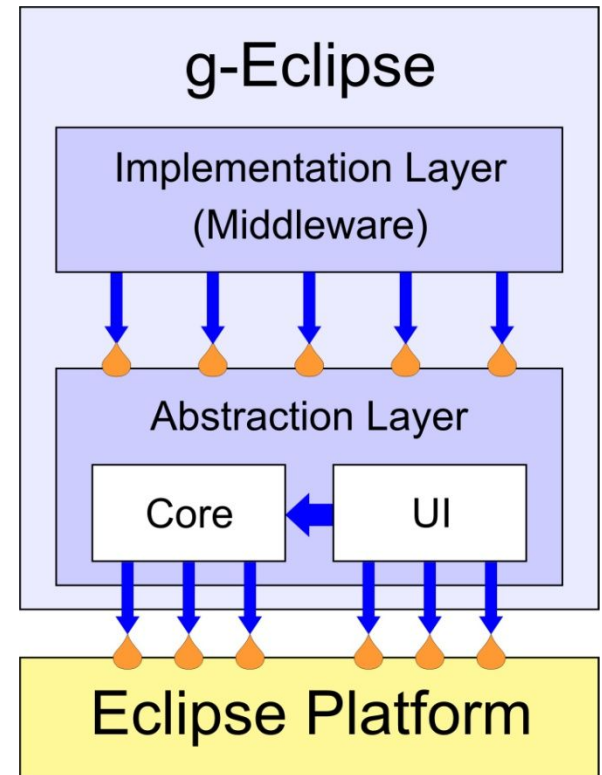
- ◆ Grid users,
- ◆ Grid resource providers
- ◆ Grid application developers

Extensible framework including a Grid model for seamless integration of Grid/Cloud resources

Supports different Cloud/Grid middleware

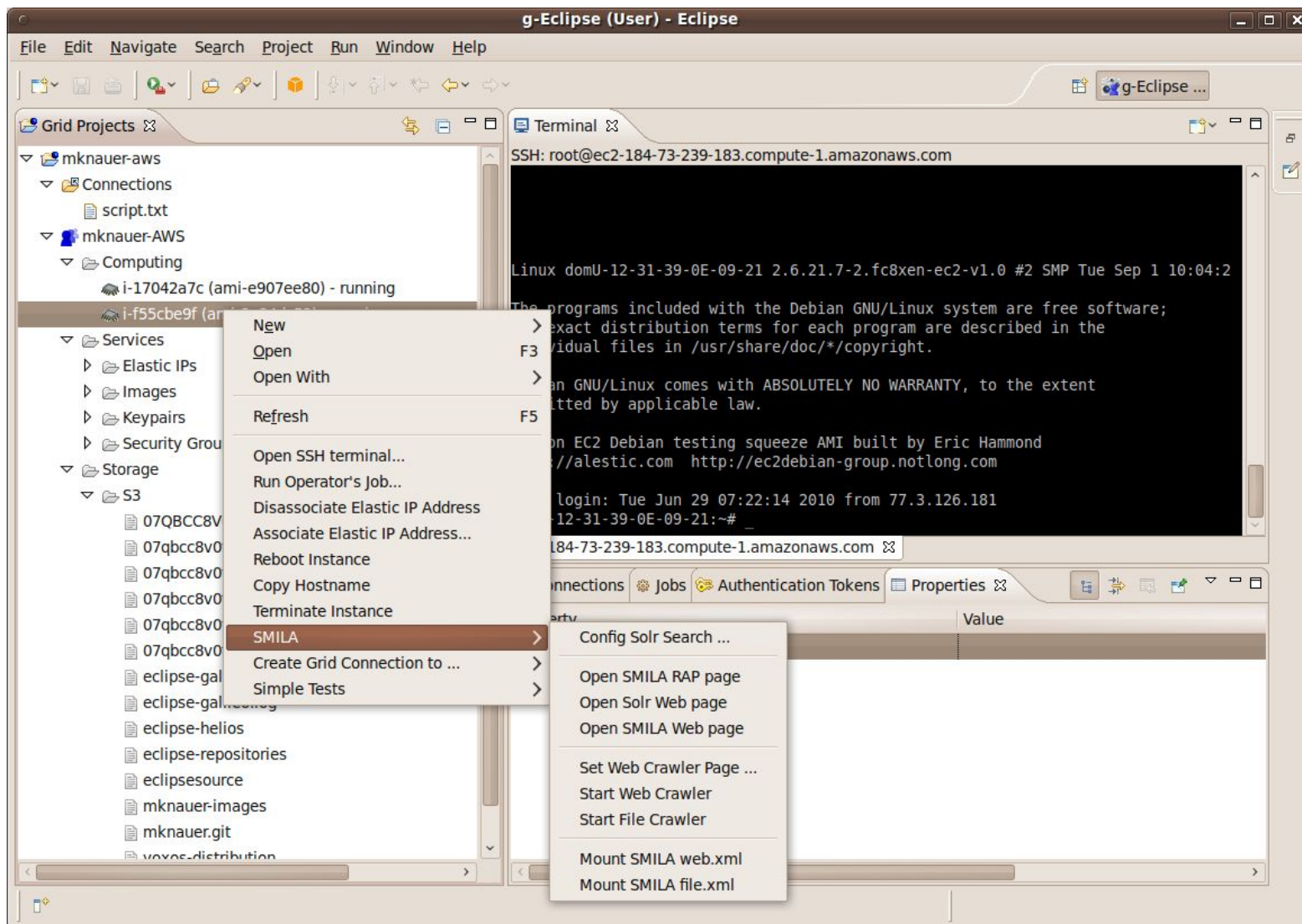
- ◆ gLite, GRIA (middleware from EC projects)
- ◆ Amazon Web Service (AWS)

Can run in headless mode as API



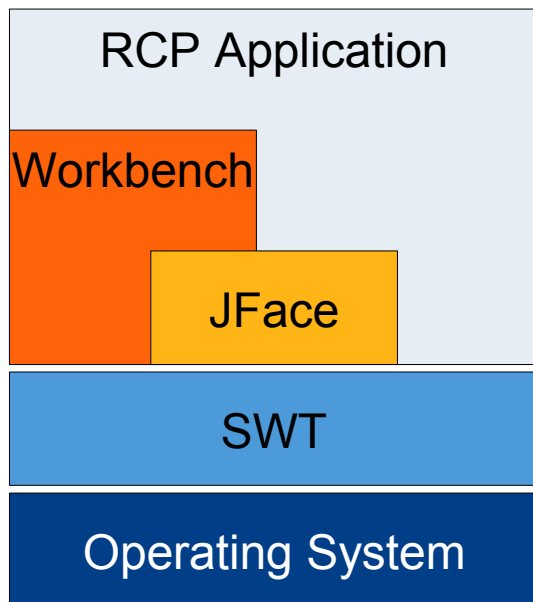
🔹 Eclipse Extension Point



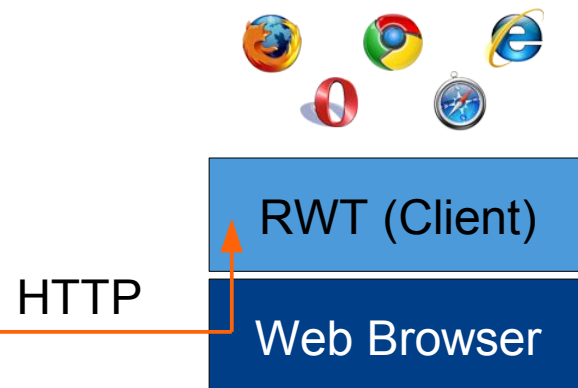
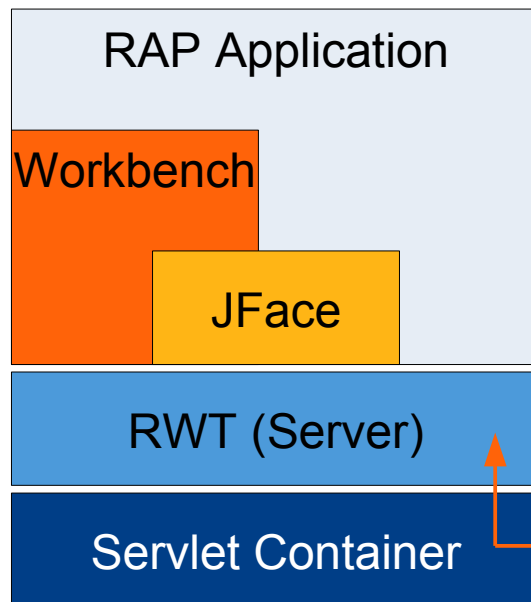


# RAP – Rich Ajax Platform

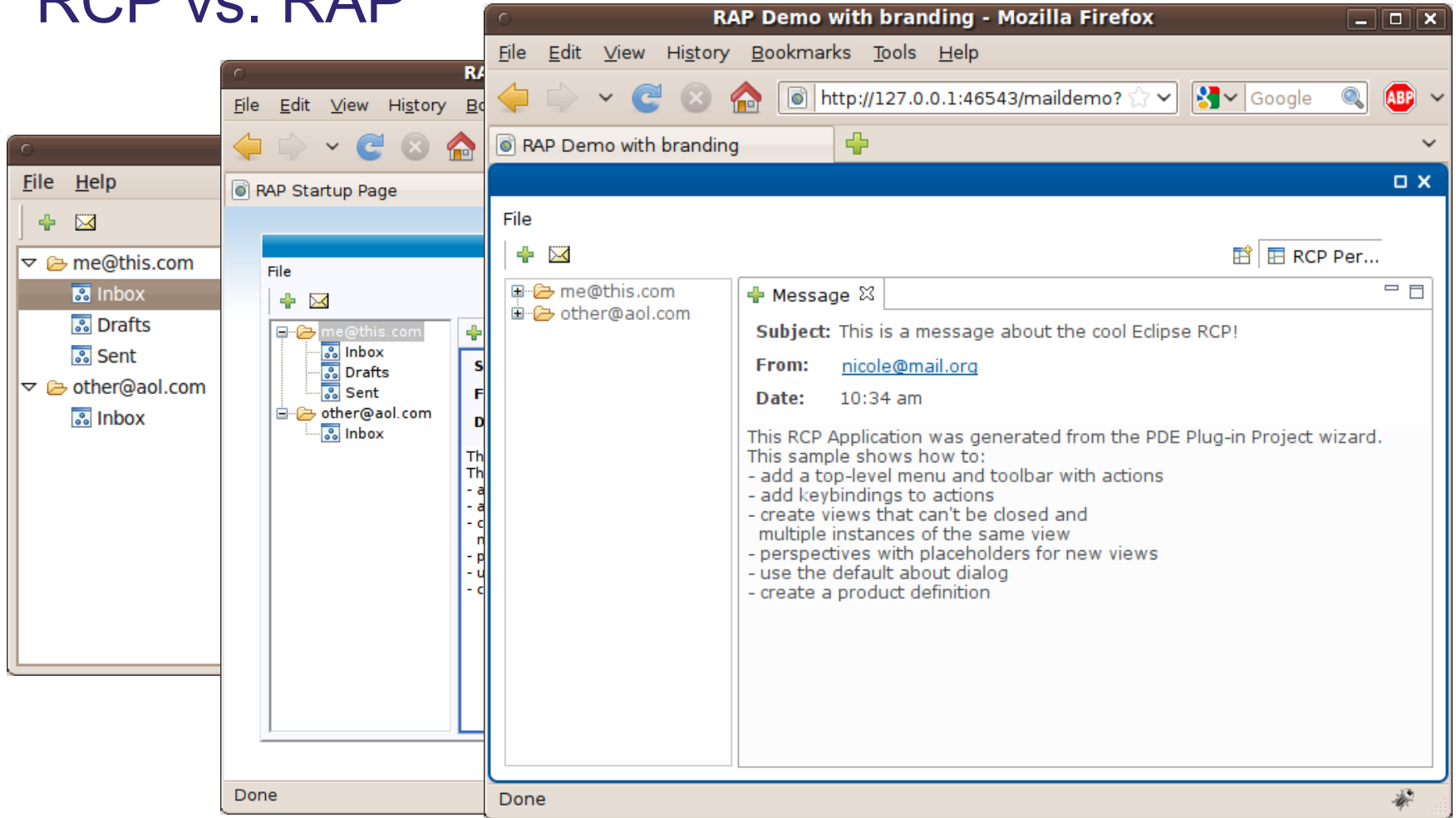
## Eclipse RCP



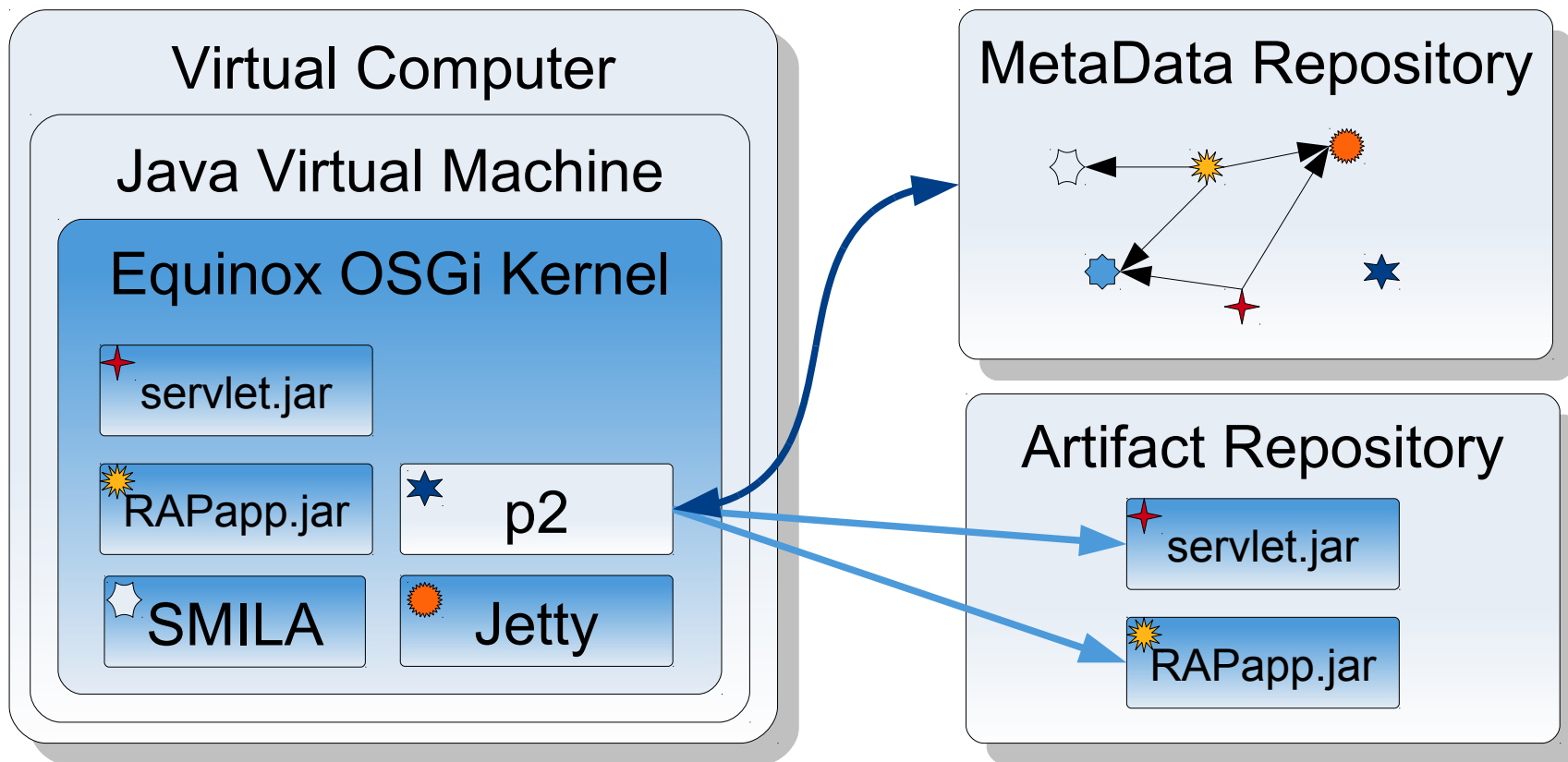
## Eclipse RAP



# RCP vs. RAP

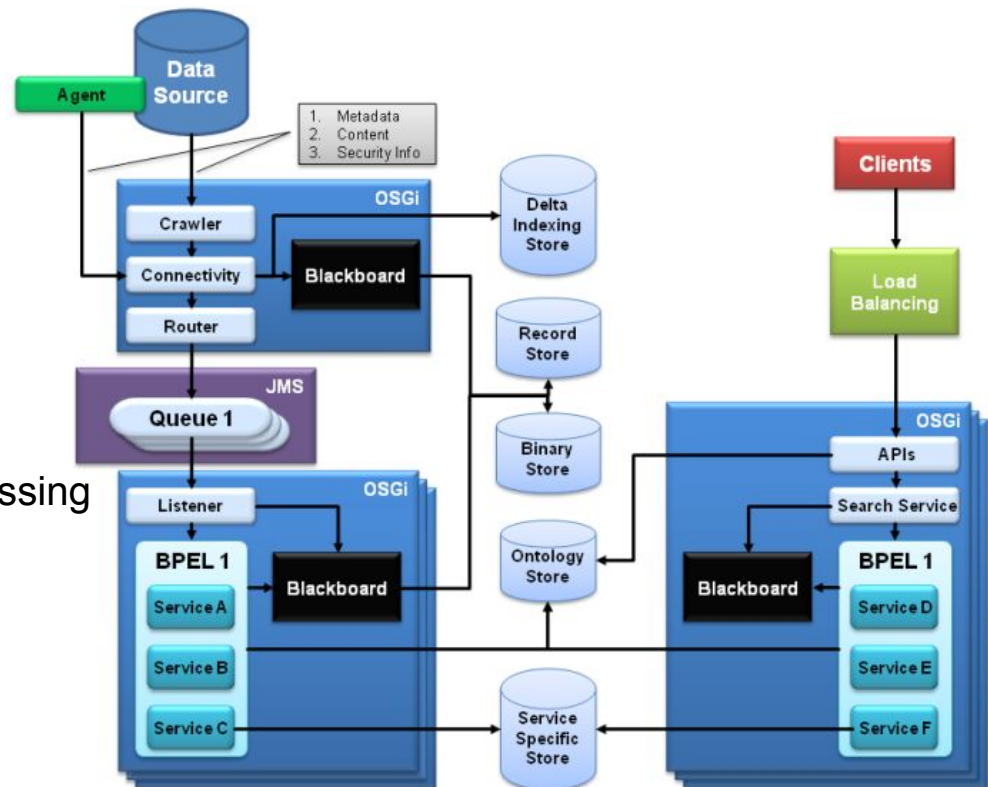


# Dynamic Provisioning with p2

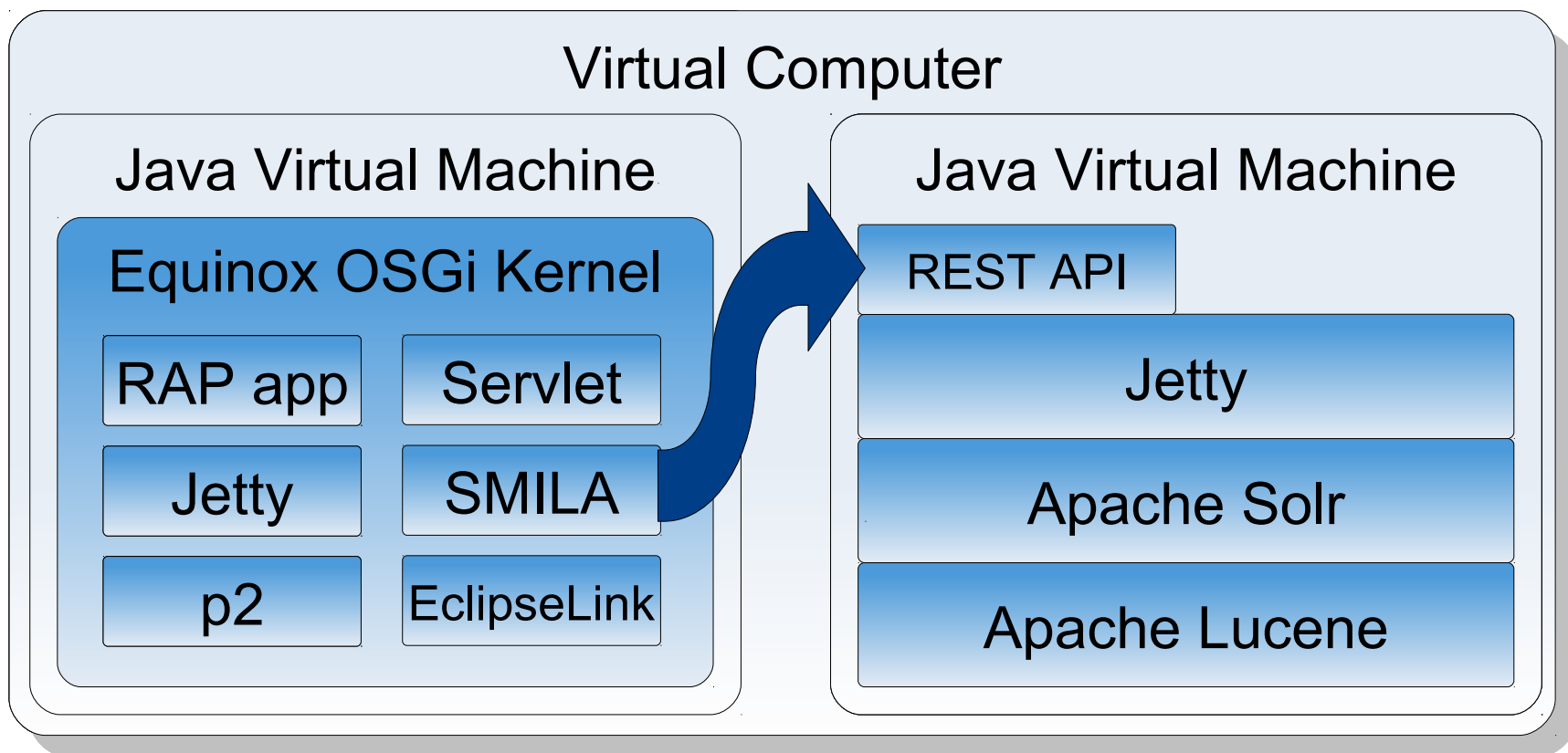


# SMILA

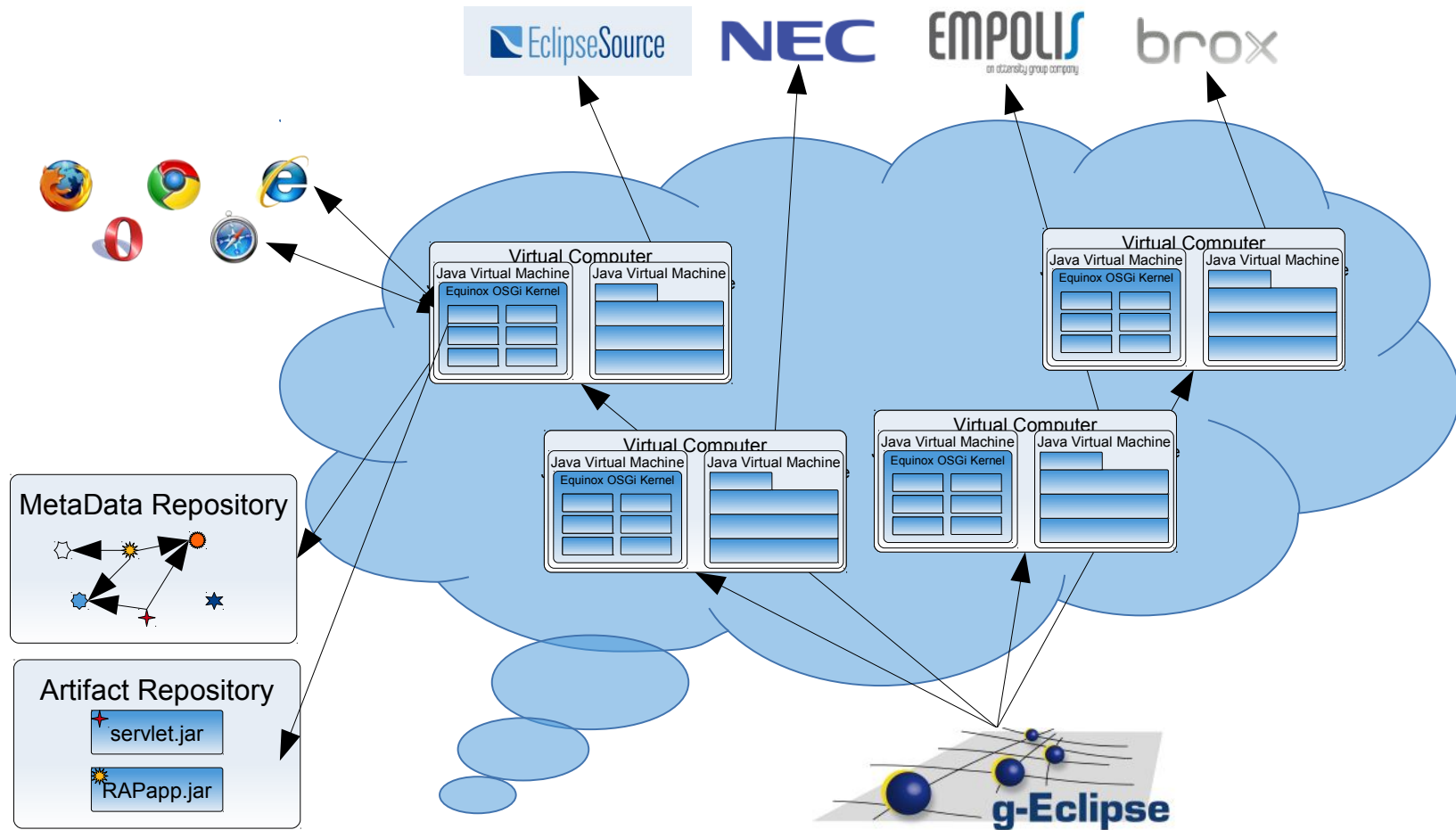
- Enterprise Search Framework
- Rich persistence layer
  - ◆ Metadata
  - ◆ Binary
  - ◆ Ontology
  - ◆ Delta indexing
- Message distribution
  - ◆ JMS
- Access rights management
- Flexible workflow framework for processing and search
  - ◆ BPEL
- Ready-to-use components
  - ◆ Diverse crawlers and agents
  - ◆ Search engine
- General monitoring and management
  - ◆ JMX



## Inside a Cloud Instance



# The Big Picture





## Wrap-up


- Co-operation between multiple Eclipse projects
  - ◆ RAP
  - ◆ G-Eclipse
  - ◆ SMILA
  - ◆ ...
- Running in a cloud
- g-Eclipse used for managing nodes in the cloud
- SMILA used as search and processing framework
- Available as a service
- <http://cloudle.eclipsesource.com/search>

Markus Knauer  
mknauer@eclipsesource.com

[eclipse.org/geclipse](http://eclipse.org/geclipse)  
[eclipse.org/smila](http://eclipse.org/smila)  
[eclipse.org/rap](http://eclipse.org/rap)

## Credits

- Harald Kornmayer
- Igor Novakovic
- Sebastian Voigt

All images used in this presentation are licensed under  **creativecommons** with reference by name.

The material was obtained from [www.flickr.com](http://www.flickr.com) and has the following originators:

Slide No.	Originator
1	ancawonka