



Sun ONE Studio 4 Überblick und Demo

Kurt Greger
Systemberater (presales)
Sun Microsystems GmbH



Sun Open Net Environment Vision, Architecture, Platform, Expertise

- Open, Standards-based Architecture

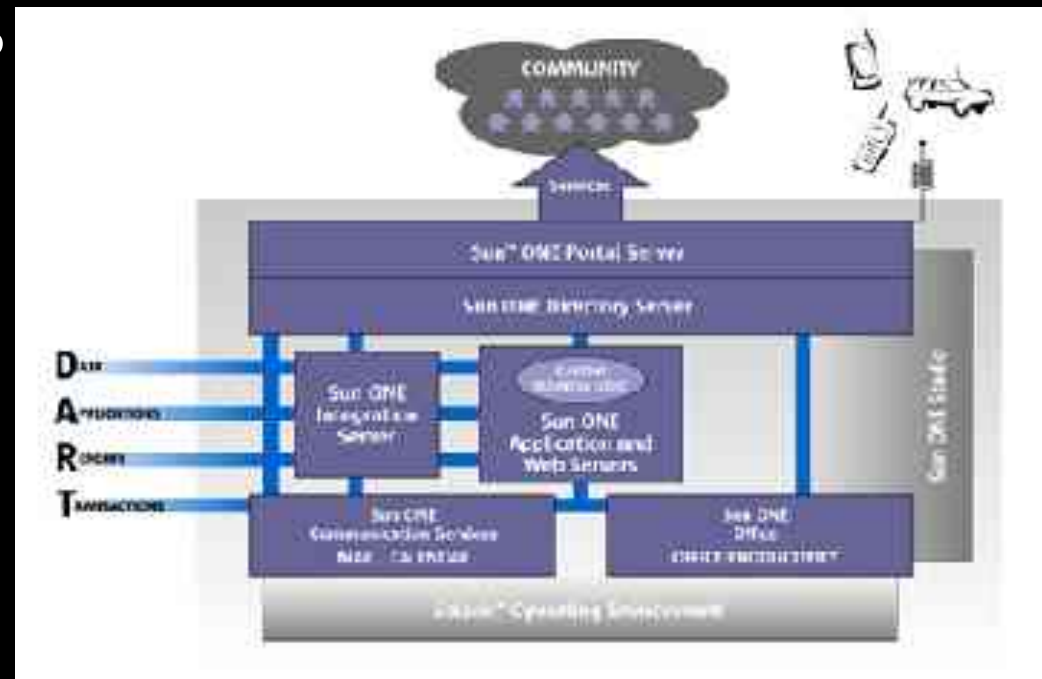
- LDAP, XML, Java, SOAP
- “integratable stack”

- Services on Demand

- Leverage information
- Web applications
- Web services

- Integrated Platform

- Sun ONE Infrastructure Software
- Solaris Operating Environment
- Sun ONE Studio



Sun ONE Studio today



Fueling Innovation™

April 2002



4/5 Stars



4/5 Stars



March 2001

- Over 1,977,000 downloads
- Over 4.1 million distributions
- Rave reviews and awards (JavaWorld, PC Magazine, Software Development Online, InfoWorld)
- "We evaluated every Java IDE available and none offered the flexibility and freedom of the Forte for Java product."

Tim Ferrell, IT Director McGee Corporation

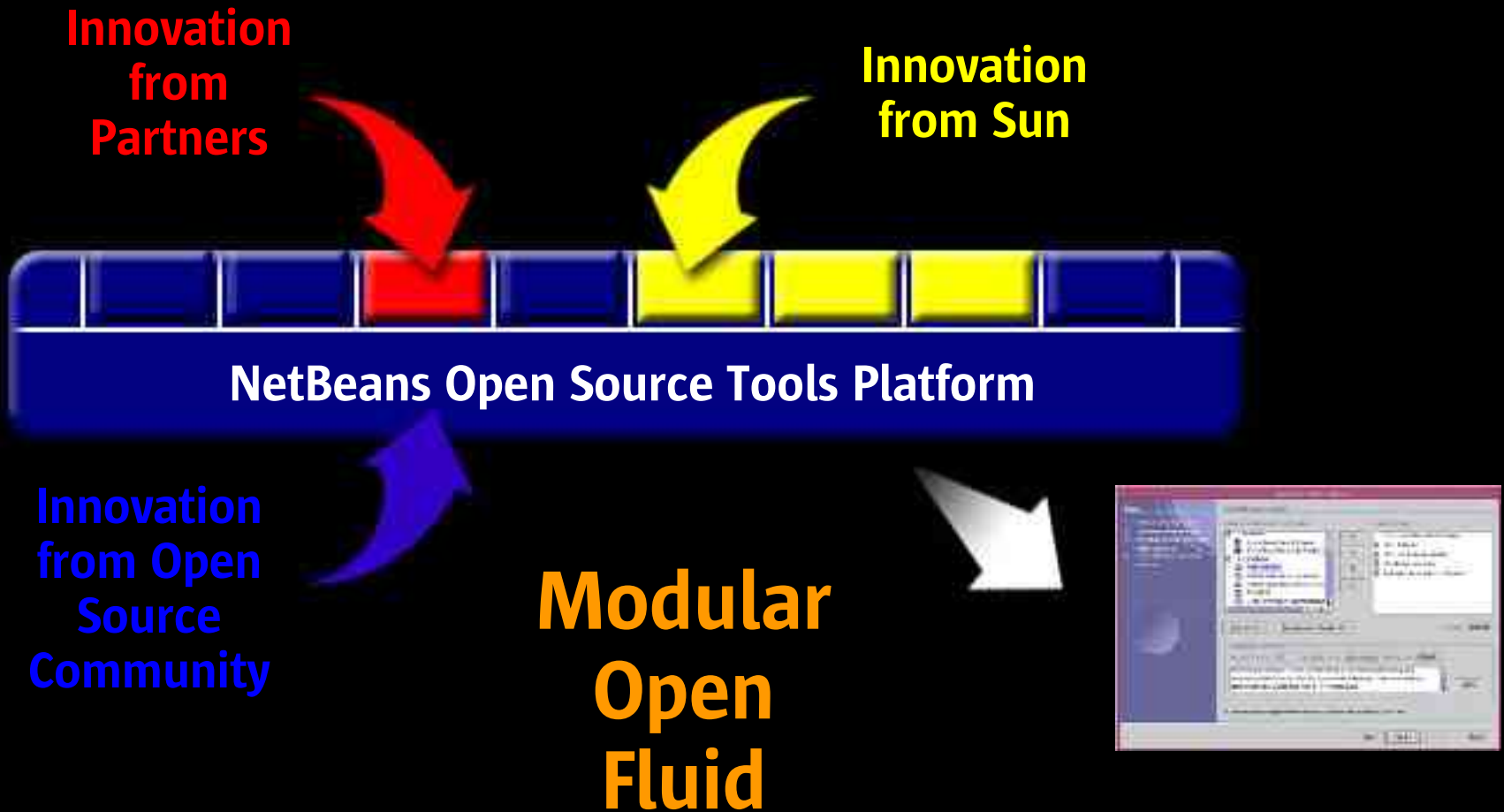


InfoWorld Review, April 2001

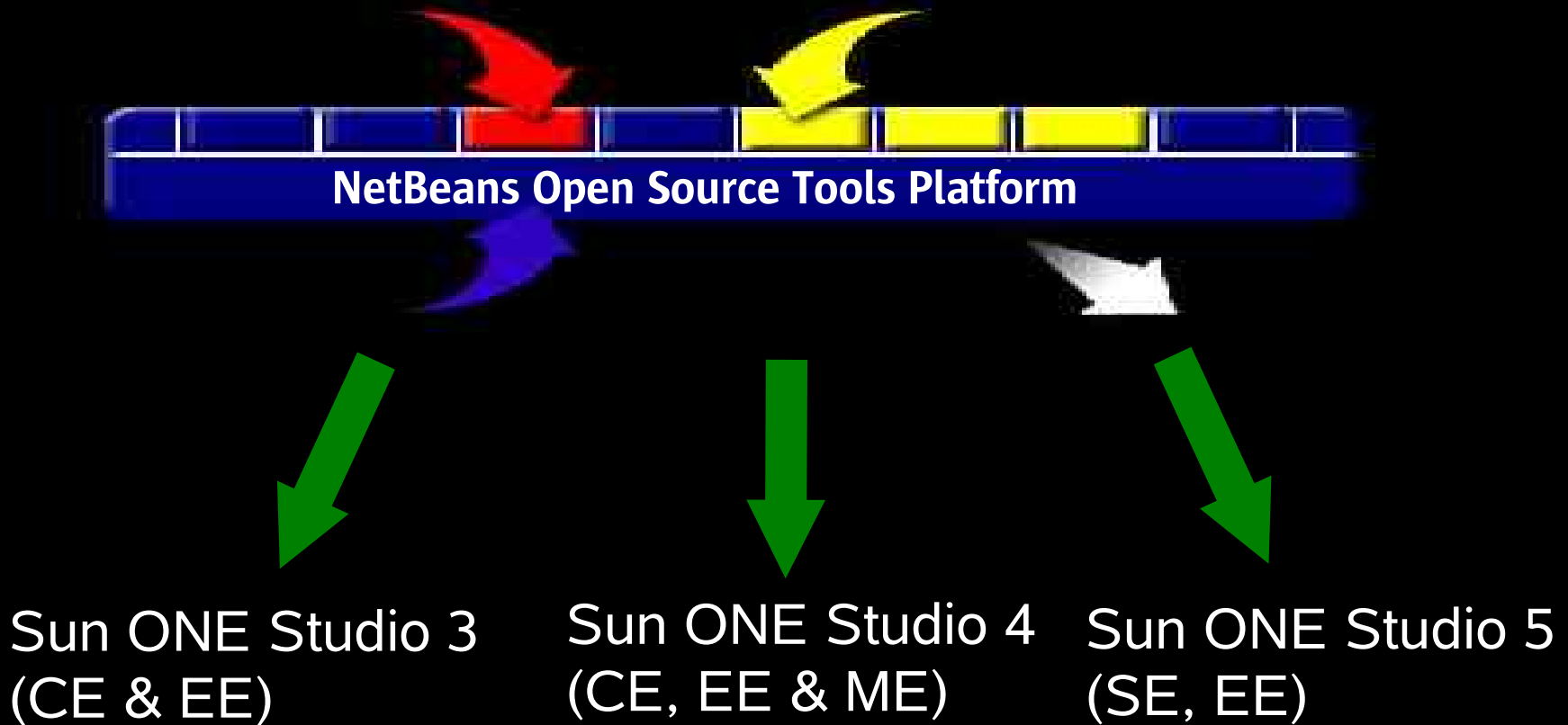


April 2001

Sun ONE Studio Approach



NetBeans & Sun ONE Studio



Sun ONE Studio – based on an Open Tools Platform



- Sun ONE Studio based on the NetBeans framework
 - can be extended by the developer community
- Open source ensures APIs are not controlled by any one vendor
- The IDE is a platform:
 - Provides feature rich functionality
 - ISV partners provide value added plug-ins that easily integrate into the IDE
 - ISVs can use NetBeans to develop own tools and solutions

Sun ONE Studio Partners

App Servers

- BEA
- Oracle
- IONA
- ...and more

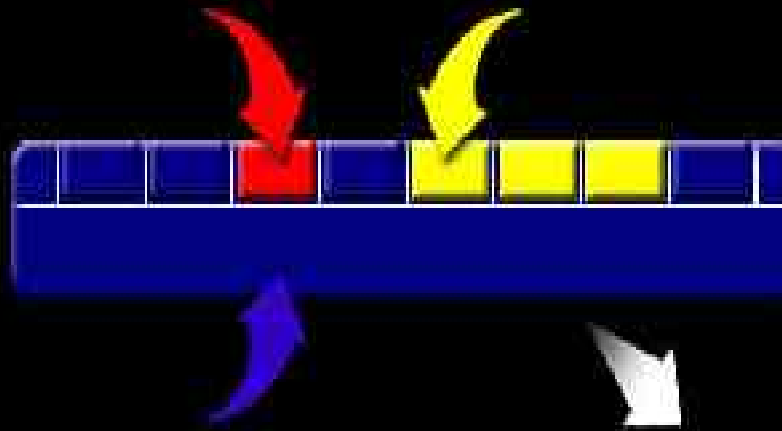
Wireless

- Nokia
- Siemens
- Lutris
- ...and more

Modeling

- Rational
- Embarcadero
- Gentleware
- ...and more

Modular Architecture



Testing/versioning

- Sitraka
- Rational
- Compuware

Web Services

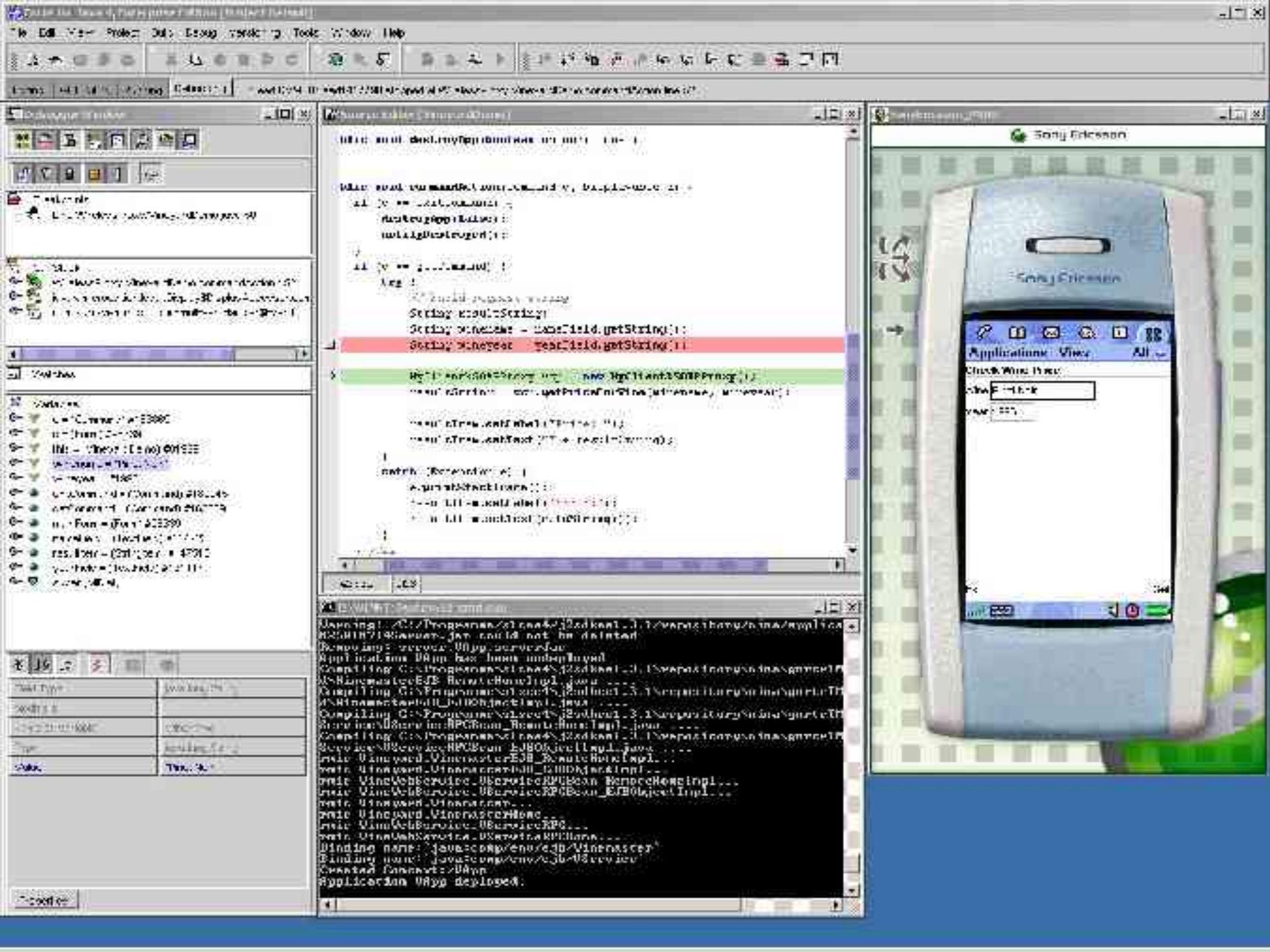
- ebyz
- systinet
- lopsis
- Killdara
- ...and more

Persistence/OR Mapping

- Thought Inc.
- HYWY Software
- Persistence
- ...and more

XML/EAI

- WebMethods
- Vitria
- BDI Systems
- ...and more



Sun ONE Studio Partner Modules

- Embarcadero Describe

- UML Modeling Tool
- Accelerate Learning
- 2 way Editing in the code or model



- Aqris RefactorIt

- Manage Large Code
- Easily find and rename methods, classes
- Check Dependencies



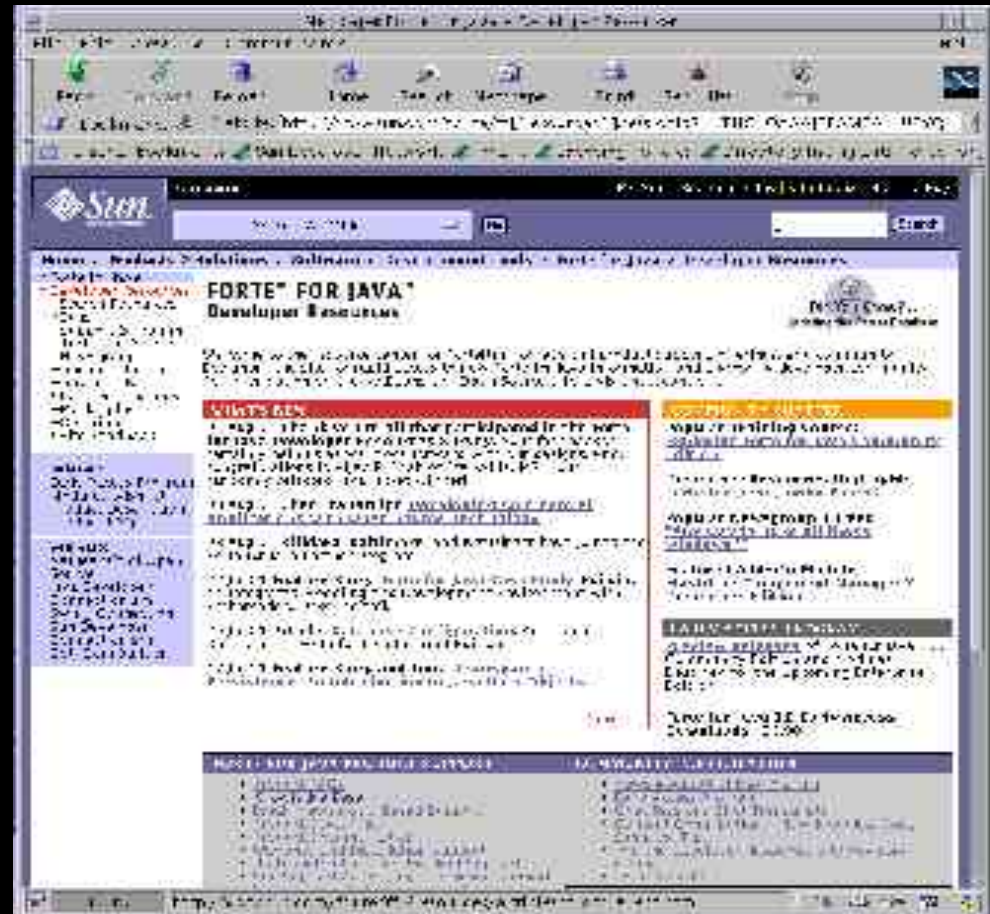
RefactorIT features

- **Rename**
 - Renames a method, field, type, package or prefix. Updates all references
- **Move Class**
 - Moves a class or interface into another package
- **Encapsulate Field**
 - Replaces direct field usage with corresponding accessor methods
- **Create Factory Method**
 - Replaces Constructor with a Factory Method
- **Extract Method**
 - Analyzes the selected piece of code and extracts it into a separate method
- **Extract Super-class/Interface**
 - Extracts selected methods and fields into new superclass or interface
- **Minimize Access Rights**
 - Determines and changes access modifiers for class fields and methods
- **Create Constructor**
 - Creates constructor on group of field declarations that initializes these fields

Developer Resources Portal

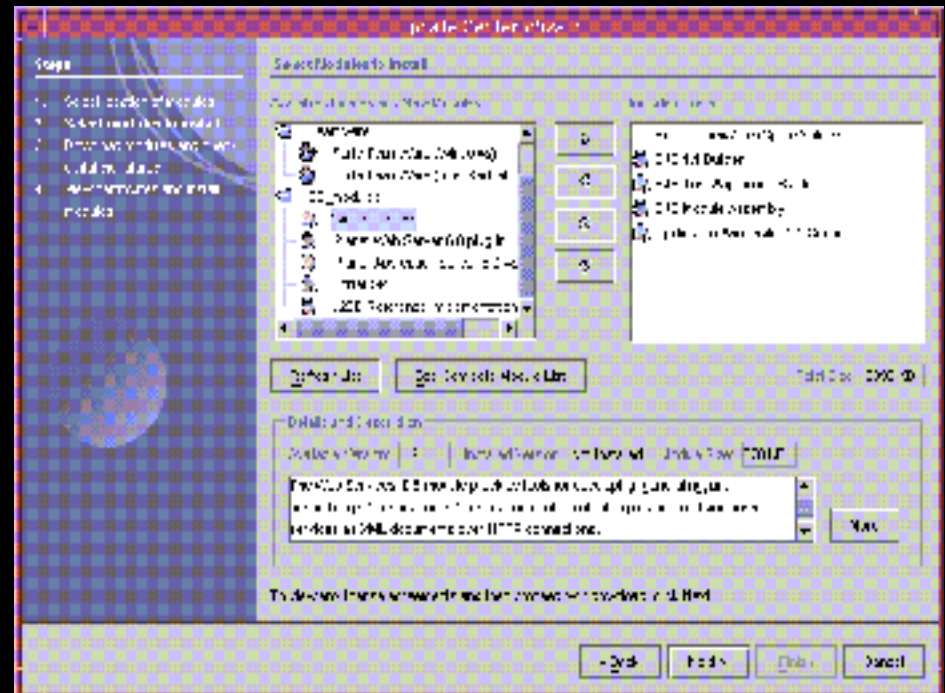
<http://forte.sun.com>

- Product Support
 - FAQs, Knowledge Base, Newsgroups, Bug Fixes, Docs, Fee Based Support, Web Based Training
- Community Participation
 - Newsgroups, Early Access Program, Chats, Contribute Content, Advisory Council, Newsletter
- Java programming support
- Submit and review bugs
- Download patches and modules



Sun ONE Studio Update Service

- Powerful Web-based Service for Developers
 - Wizard in the IDE
 - Patches
 - Module Updates
 - New Modules



Join the Early Access Program at
<http://forte.sun.com/eap/>

Sun ONE Studio Product Family

- Java Tools
 - Mobile Edition
 - Free IDE: Development of CLDC/MIDP Applications
 - Community Edition
 - Free IDE: J2SE and Web Tier Development
 - Enterprise Edition
 - J2EE 1.3 and Web Services Development
- Native Solaris Tools
 - Compiler Collection (command-line compilers and debuggers)
 - Enterprise Edition for Solaris
 - Multilanguage IDE for Java, C, C++ and Fortran

Sun ONE Studio 4 Mobile Edition

- Standalone IDE or add CE/EE
- Highly Optimized Environment for J2ME MIDP/CLDC Development
 - MIDlet & MIDlet Suite Templates
 - Compilation, Pre-verification and Execution
 - Source Level Debugging
 - JAD/JAR file generation and J2ME Code Completion
 - UEI allows easy target emulator switching
- Distribution Partners



Sun ONE Studio 4 Community Edition

- Basic Java Application Development
 - JavaBean builders, GUI Form Editor
 - Latest J2SE SDK Support V. 1.3.1, 1.4.0, 1.4.1
- Dynamic Content Web Apps
 - JSP, Servlet, JSTL and JDBC support
 - HTTP Transaction monitor & integrated Tomcat
- Update Center
- Standard Environment Support
 - Ant, CVS and generic VCS



Sun ONE Studio 4 Enterprise Edition

- J2EE 1.3 Compatible IDE
 - EJB2.0 (incl. MDB), JSP 1.2, Servlets 2.3
 - Package and deploy .rar, .jar, .war, .ear files
 - Connector Builder to support JCA resource adapters
 - Portlet Builder, SmartGuides, Database Support
 - Concentrate on Building Business Logic
- Web Services Support
- J2EE 1.3 Application Server Support
- Supports:
 - Windows NT, 2000 and XP,
 - Solaris 8 and 9, RH Linux 7.2



Application Server Integration

Plugging Modules for:

J2EE Reference
Implementation 1.3.1

Sun ONE App. Server 7

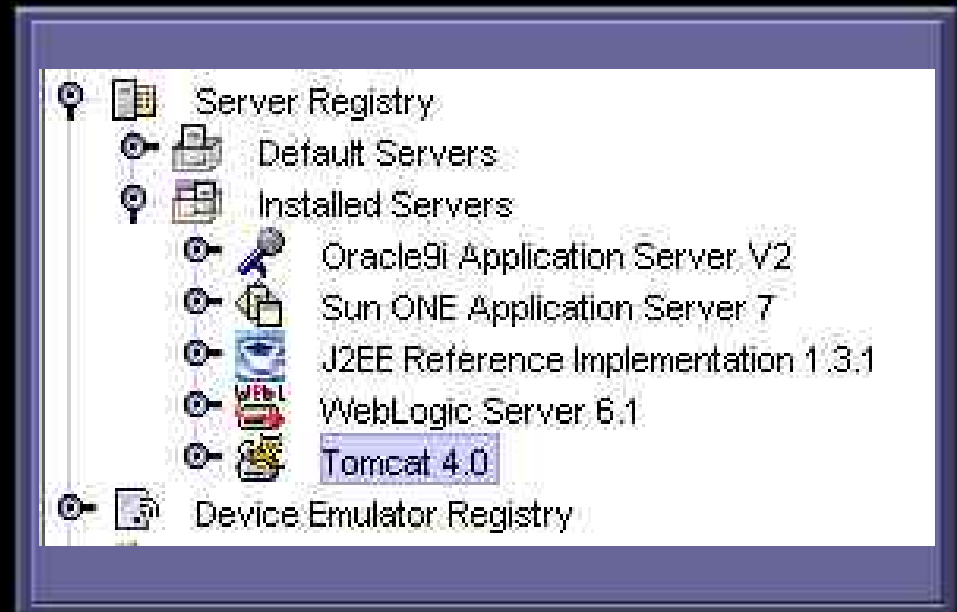
Tomcat 4.0

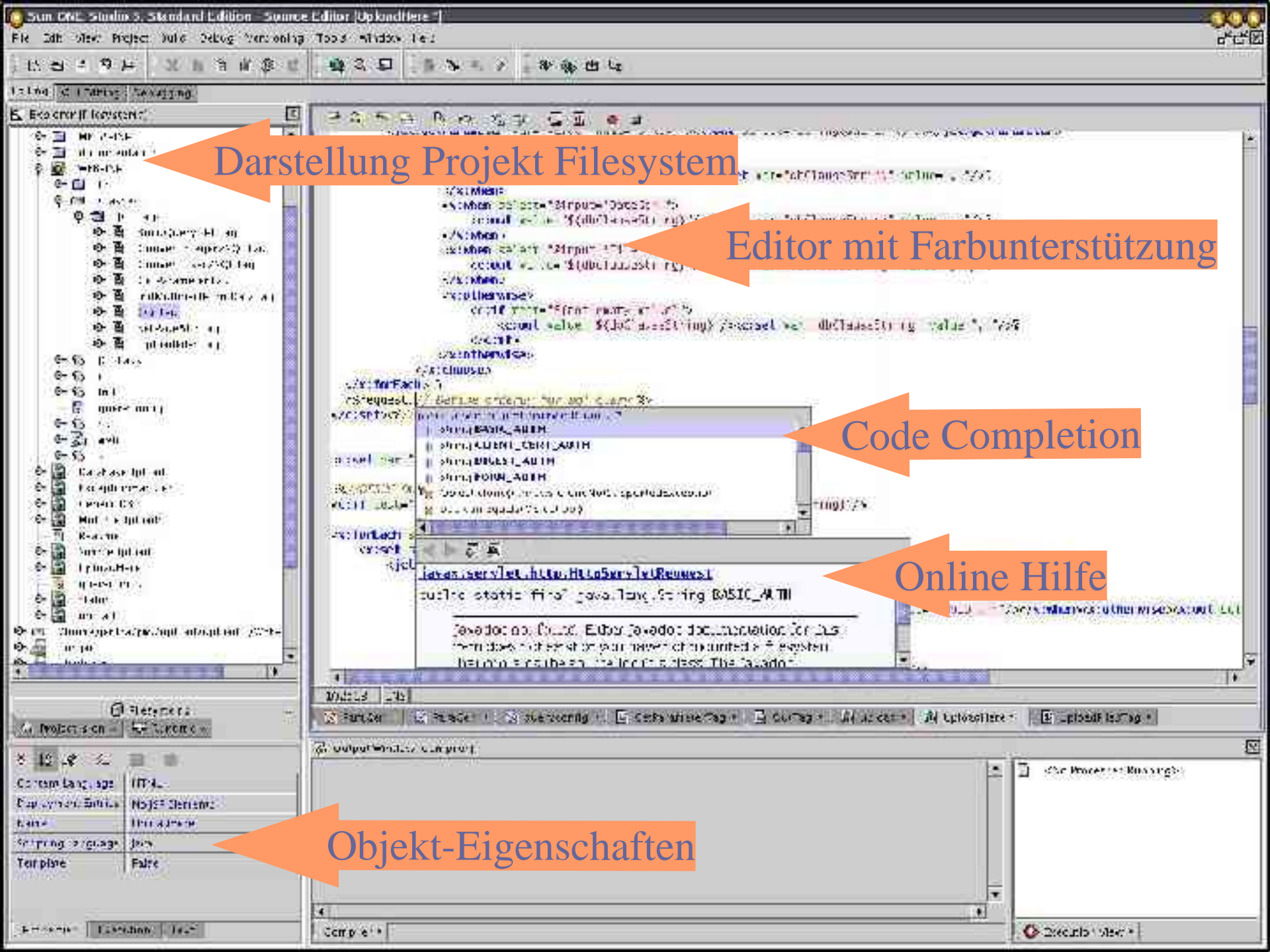
Oracle 9i App Server

BEA WebLogic 6.1 & 7

WebSphere & JBOSS

Open source Application
Server Integration API





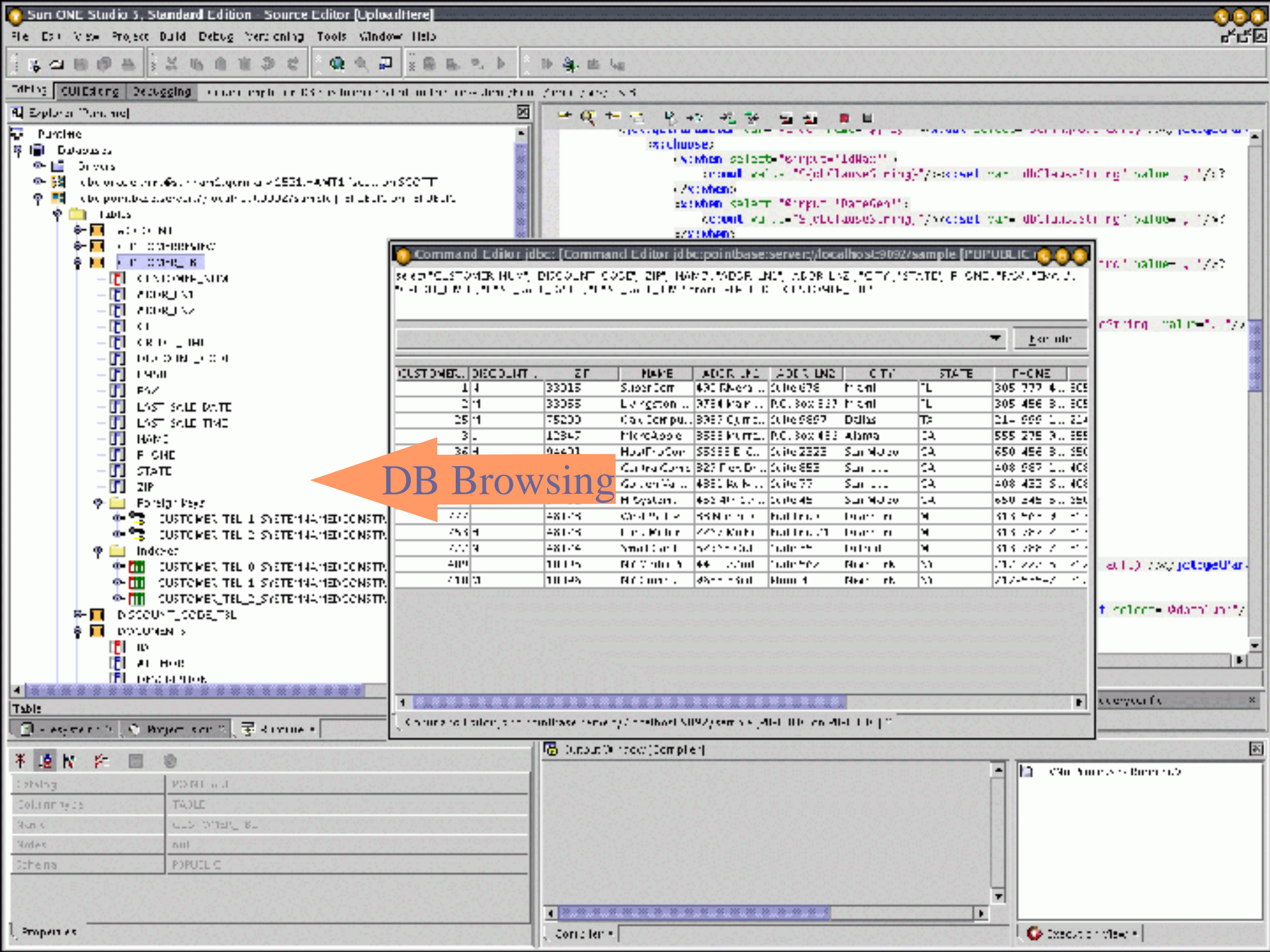
Darstellung Projekt Filesystem

Editor mit Farbunterstützung

Code Completion

Online Hilfe

Objekt-Eigenschaften



DB Browsing

CUSTOMER_ID	DISCOUNT_CODE	ZIP	NAME	ADDR_LIN1	ADDR_LIN2	CITY	STATE	F_PHONE
14	33015	33015	Subst Corp	430 Parkers...	Circle 678	Princeton	IL	305 777 4... BCE
24	33055	33055	Langston	3734 Park...	P.O. Box 527	Princeton	IL	305 456 8... BCE
254	75200	75200	Gas Comp...	3387 Camp...	Circle 887	Dallas	TX	214 566 1... 224
3	12947	12947	MicroSoft	8555 Park...	P.O. Box 432	Atlanta	GA	555 278 3... 555
364	94431	94431	HomePro	5555 E. Co...	Circle 222	San Jose	CA	650 456 8... 560
			Green Corp	327 Park Dr...	Circle 888	San Jose	CA	408 567 1... 408
			Golden Gate	4381 Red B...	Circle 77	San Jose	CA	408 433 5... 408
			H Systems	452 4th St...	Circle 45	San Jose	CA	650 445 6... 250
777	48174	48174	CompuLink	5556 Park...	Redwood	Franklin	MA	617 567 8... 517
754	48174	48174	Franklin	7777 Kitch...	Redwood	Franklin	MA	617 567 8... 517
777	48174	48174	Small Corp	5555 Park...	Redwood	Franklin	MA	617 567 8... 517
888	10124	10124	Red Corp	44 4th St...	Redwood	Franklin	MA	617 567 8... 517
777	10124	10124	Red Corp	45 4th St...	Redwood	Franklin	MA	617 567 8... 517

Web Services Support - Choice of Solutions

- Sun ONE Studio 4, Enterprise Edition native support
 - Support for JAX-RPC (SOAP, WSDL) and JAXR (UDDI)
 - Generating Web Services from WSDL or existing Java Components
 - Generating Client Proxies and Test Clients
- Sun ONE Studio Extension Partners
 - Provide bleeding edge technology
 - Web Services for J2ME applications

Sun ONE Studio Web Services Support

- SOAP 1.1 specification
 - <http://www.w3.org/TR/2000/NOTE-SOAP-20000508>
- JAX-RPC 1.0
 - <http://jcp.org/jsr/detail/101.jsp>
- kSOAP 1.0 (a SOAP API suitable for J2ME)
 - <http://www.ksoap.org/>
- WSDL 1.1 specification
 - <http://www.w3.org/TR/2001/NOTE-wsdl-20010315>
- UDDI 2.0 specification
 - <http://www.uddi.org/specification.html>
- JAXR 1.0. API specification
 - <http://jcp.org/jsr/detail/93.jsp>
- J2EE 1.3 components, e.g. J2EE 1.3 Ref. Impl.

Sun ONE Application Framework

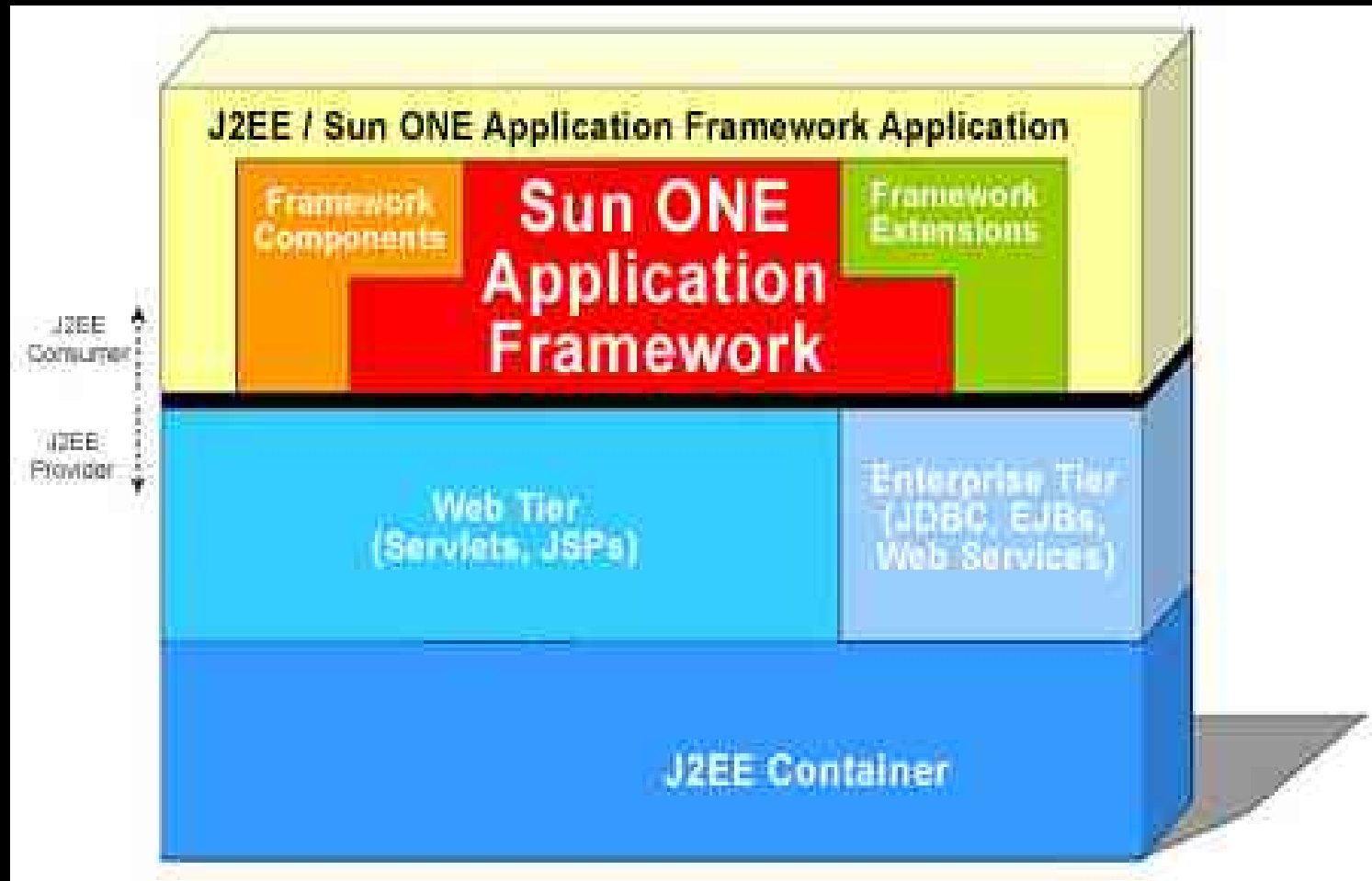
The Sun ONE Application Framework product provides:

- A consistent, extendable, scaleable and robust core Web Application infrastructure foundation for any Enterprise.
- Provides major design pattern implementations.
- A pure J2EE technology solution for any J2EE container.
- Wizard based Web Application creation using Sun ONE Studio (Plugin) abstracts all of the key aspects of the underlying framework technology

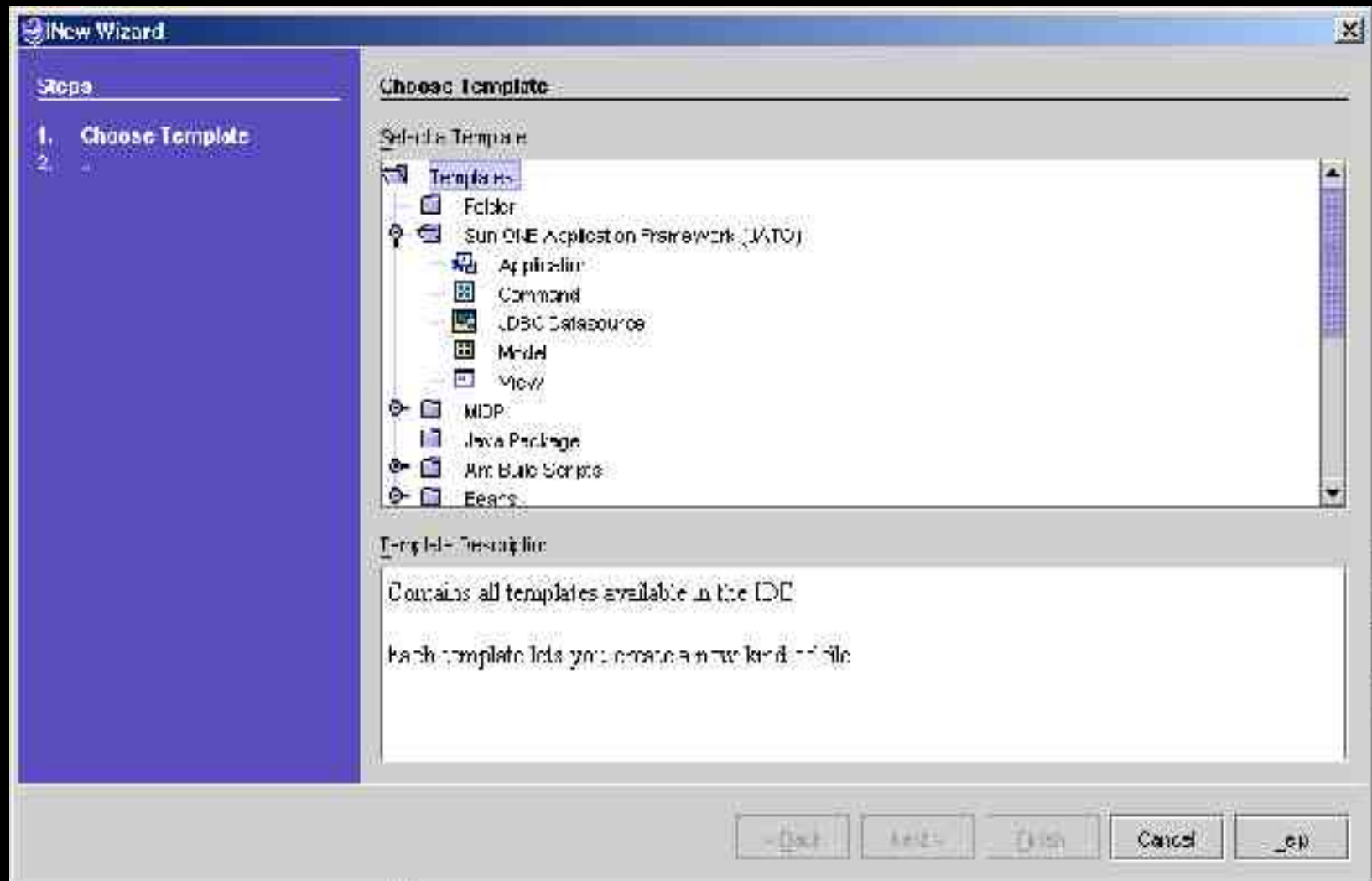
S1AF Key Features

- Pure J2EE JAVA
- Evolving graphical tools.
- Enterprise strength Web Application Development
- Powerful Component usage methodology
- Well defined Models (and Custom models)
- Multiple Rendering (same business logic)
- Events (application level, page level and field level)
- Web Services using JAX RPC (requiring no developer code)

S1AF Architecture



Sun ONE Studio and S1AF



Sun ONE Studio 5

- Standard Edition only
 - Standard Edition 5 == Enterprise Edition 4
 - No Community Edition going forward
 - Mobile Edition will release later this summer
 - Enterprise Edition with greater functionality (Modeling, Refactoring,)
- Downloadable on 9.6.2003
 - <http://www.sun.com/software/sundev/jde/index.html>
- Mediakits on 31.7.2003
- Based on NetBeans 3.5
 - Work done contributed back to open source community
- Localized in Japanese, Chinese

Sun ONE Studio 5

- Performance, Performance, Performance
- Better integration with S1AS7
 - One button deploy
- JUnit testing Framework
- Updated support for JAX-RPC via JWSDP
 - Full JAX-RPC support (e.g. Session Duration, SOAP Header Processing, SOAP Attachments, Custom Serializer)
- Support on
 - Solaris SPARC and X86
 - Windows XP, 2000
 - RH Linux 8.0

Futures - Project Rave

- Targeting Corporate Developers
 - Application assemblers, not coders (for the most part)
 - Java for the mere mortal
 - Visual development of Web Applications
- Roadmap
 - Project Announcement at JavaONE
 - Early access around SunNetwork Conference
 - GA around JavaONE 2004

Sun ONE Studio Portals

- Open Source Portal
 - NetBeans OpenSource Community at www.netbeans.org
- Sun ONE Portals
 - Central portal for all resourcen around Sun ONE Studio: forte.sun.com
 - Marketplace for modules around Sun ONE Studio www.sun.com/forte/ffj/modulemarket

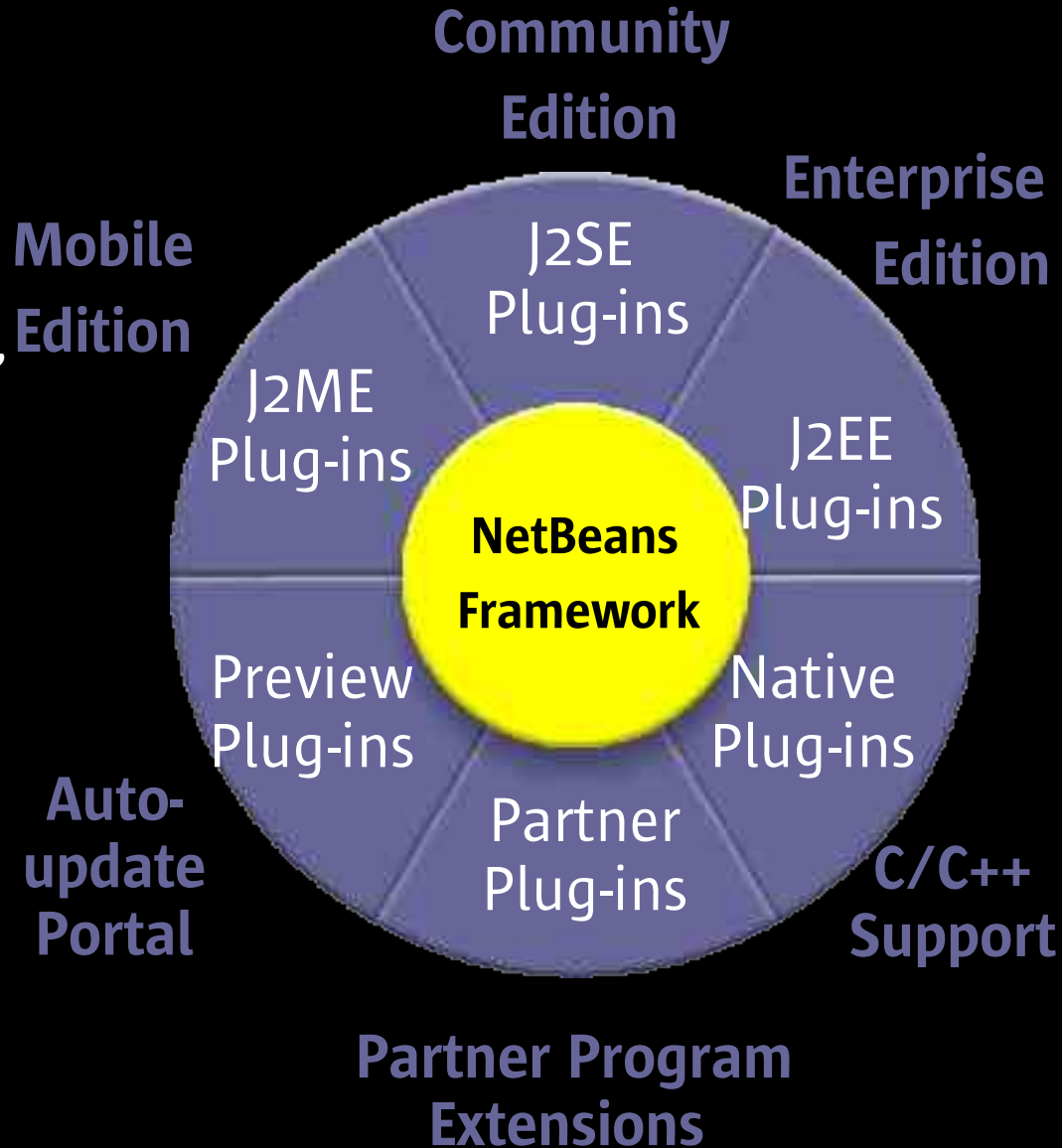
Tight integration of product and portal!

Useful URLs

- www.sun.com/software/sundev
- Www.netbeans.org
- forte.sun.com
- java.sun.com
- wireless.java.sun.com

In Summary

- Editions for Java
 - Mobile Edition(J2ME)
 - Community Edition(J2SE)
 - Enterprise Edition(J2EE)
 - Application server & Web Services support (JAX-Pack, SOAP, WSDL, etc.)
- Editions for Solaris
 - Compiler Collection
 - Enterprise Edition (IDE plus compilers)
- Partner Program
 - 100+ partners shipping 50+ plug-ins today
- Auto-update capability
- NetBeans Framework
 - source:www.netbeans.org
 - No vendor lock-in/out





kurt.greger@sun.com

